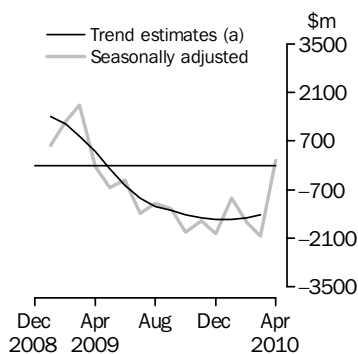


# INTERNATIONAL TRADE IN GOODS AND SERVICES

AUSTRALIA

EMBARGO: 11.30AM (CANBERRA TIME) THURS 3 JUN 2010

## Balance on Goods and Services



(a) A trend break of \$800m has been applied to April 2010.

## KEY FIGURES

	Feb 2010	Mar 2010	Apr 2010	Mar 10 to Apr 10 %
	\$m	\$m	\$m	change
<b>BALANCE ON GOODS AND SERVICES<sup>(a)</sup></b>				
Trend estimates	-1 507	-1 424	-502	..
Seasonally adjusted	-1 641	-2 040	134	..
<b>CREDITS (Exports of goods &amp; services)<sup>(a)</sup></b>				
Trend estimates	20 470	20 786	21 942	..
Seasonally adjusted	20 183	20 470	22 661	11
<b>DEBITS (Imports of goods &amp; services)</b>				
Trend estimates	21 977	22 210	22 444	1
Seasonally adjusted	21 825	22 510	22 527	—

.. not applicable

— nil or rounded to zero (including null cells)

(a) A trend break of \$800m was applied between March and April 2010. See page 2 'Iron ore prices' for details.

## KEY POINTS

### BALANCE ON GOODS AND SERVICES

- The trend estimate of the *balance on goods and services* was a deficit of \$502m in April 2010. A trend break of \$800m was applied between March and April 2010.
- In seasonally adjusted terms, the *balance on goods and services* was a surplus of \$134m in April 2010, a turnaround of \$2,174m on the revised deficit in March 2010.

### CREDITS (EXPORTS OF GOODS & SERVICES)

- In seasonally adjusted terms, *goods and services credits* rose \$2,191m (11%) to \$22,661m. *Non-rural goods* rose \$2,292m (18%) and *net exports of goods under merchanting* rose \$15m (65%). *Rural goods* fell \$67m (3%), *non-monetary gold* fell \$48m (4%) and *services credits* fell \$1m.

### DEBITS (IMPORTS OF GOODS & SERVICES)

- In seasonally adjusted terms, *goods and services debits* rose \$17m to \$22,527m. *Non-monetary gold* rose \$299m (50%), *consumption goods* rose \$151m (3%), and *capital goods* rose \$30m (1%). *Intermediate and other merchandise goods* fell \$439m (6%) and *services debits* fell \$24m.

## INQUIRIES

For further information contact Olivia Lam on Canberra (02) 6252 5540 for Goods, and Andrew Tomadini on Canberra (02) 6252 7094 for Services.

# NOTES

## FORTHCOMING ISSUES

ISSUE	RELEASE DATE
May 2010	6 July 2010
June 2010	4 August 2010
July 2010	2 September 2010
August 2010	5 October 2010
September 2010	4 November 2010
October 2010	2 December 2010



## REVISIONS

Revisions have been made to incorporate the latest available data relating to merchandise trade. There were no revisions to the balance of payments series in original terms.

## IRON ORE PRICES

In the merchandise trade series used to compile goods credits, the value of iron ore and concentrates increased by 32% between March and April 2010 with volumes up 2% and prices up 29%. Since the price increase impact is likely to result in a permanent change in the level of the series (at least for the duration of the new contracts), a trend break correction of \$800m has been applied in April 2010 to metal ores and minerals and related aggregates. As a minimum of three months are required for a trend break correction to be accurately estimated, the size of the trend break may be revised. Therefore, users should interpret the trend estimates for recent months with caution.

## CHANGES IN FORTHCOMING ISSUES

The May 2010 issue of this publication and the June quarter 2010 issue of *Balance of Payments and International Investment Position, Australia* (cat. no. 5302.0) will introduce a change of treatment for the civil aircraft component. A new component 'Civil aircraft and confidentialised items' will be introduced. It will include Civil aircraft for all periods, and from July 2008 will include all commodities subject to a 'no commodity details' or 'no value details' restriction. This change will affect the statistics presented in Capital goods n.e.s. from December 2008 and Other merchandise goods for July and August 2008, but will not revise the total value of goods debits.

All civil aircraft have been confidentialised since December 2008, and therefore the components making up the 'Civil aircraft and confidentialised items' series will not be available at a lower level on a balance of payments basis.

## CALENDER YEAR TRADE IN SERVICES DATA CUBES

*Calendar Year Trade in Services data cubes* (cat. no. 5368.0.55.004) were released on 14 May 2010.

Brian Pink  
Australian Statistician

# CONTENTS

page

Time series data . . . . .	4
----------------------------	---

## ANALYSIS

Analysis and comments . . . . .	6
---------------------------------	---

## TABLES

### INTERNATIONAL TRADE IN GOODS AND SERVICES – BALANCE OF PAYMENTS BASIS

<b>1</b> Goods and services, summary, seasonally adjusted and trend estimates . . . . .	10
<b>2</b> Goods and services, summary, original . . . . .	11
<b>3</b> Goods credits, original . . . . .	12
<b>4</b> Goods debits, original . . . . .	13
<b>5</b> Goods credits, seasonally adjusted . . . . .	14
<b>6</b> Goods debits, seasonally adjusted . . . . .	15
<b>7</b> Goods credits, trend estimates . . . . .	16
<b>8</b> Goods debits, trend estimates . . . . .	17
<b>9</b> Services, summary, original . . . . .	18
<b>10</b> Services, summary, seasonally adjusted and trend estimates . . . . .	19
<b>11</b> Services, original, quarterly . . . . .	20

### INTERNATIONAL MERCHANDISE TRADE – RECORDED TRADE BASIS

<b>12</b> International merchandise exports, by commodity . . . . .	21
<b>13</b> International merchandise imports, by commodity . . . . .	24
<b>14</b> International merchandise trade, by country and country groups . . . . .	27
<b>15</b> International merchandise trade, by state . . . . .	28

### OTHER TABLES

<b>16</b> Period average exchange rates per Australian dollar . . . . .	29
<b>17</b> Summary of revisions, goods and services, original . . . . .	30

## OTHER INFORMATION

Explanatory Notes . . . . .	31
Appendix – Related articles . . . . .	37

## TIME SERIES DATA

### TIME SERIES DATA

Tables 1 to 16 of this publication are available free on the ABS website <[www.abs.gov.au](http://www.abs.gov.au)> from the Downloads tab of this issue with longer time series. A number of these tables present more detailed breakdowns than included in the publication and a number of additional tables are also available free on the ABS website.

#### *Tables with more detailed breakdowns:*

11a Services credits: Original - Quarter

11b Services debits: Original - Quarter

12b Merchandise exports by Standard International Trade Classification (3 digit), FOB Value

13b Merchandise imports by Standard International Trade Classification (3 digit), Customs Value

14a Merchandise exports, Country and Country Groups, FOB Value

14b Merchandise imports, Country and Country Groups, Customs Value

#### *Additional tables:*

31 Merchandise exports by Broad Economic Category (BEC)

32a Merchandise exports, Industry (ANZSIC 2006), FOB Value

32b Merchandise exports, Industry (ANZSIC 1993), FOB Value

33 Merchandise imports by Broad Economic Category (BEC)

34 Merchandise imports by Balance of Payments Broad Economic Category (BoPBEC)

35a Merchandise imports, Industry (ANZSIC 2006), Customs Value

35b Merchandise imports, Industry (ANZSIC 1993), Customs Value

36 Merchandise exports, state by country and country groups

37 Merchandise imports, state by country and country groups

91 Monthly seasonal adjustment factors and forward factors for 12 months.

## TIME SERIES DATA *continued*

---

### TRADE IN SERVICES DATA CUBES

Trade in Services data cubes are usually updated on an annual basis. Calendar year (cat. no. 5368.0.55.004) statistics are updated in May and financial year (cat. no. 5368.0.55.003) statistics are updated in December.

The following tables were included in the calendar year data cubes:

- 1 International trade in services, credits, state by year
- 2 International trade in services, credits, year by state
- 3 International trade in services, debits, state by year
- 4 International trade in services, debits, year by state
- 5 International trade in services, credits, year by country and service
- 6 International trade in services, credits, service by year and by country
- 7 International trade in services, debits, year by country and service
- 8 International trade in services, debits, service by year and by country
- 9 International trade in services, credits, year by country and travel service
- 10 International trade in services, debits, year by country and travel service
- 11 International trade in services, credits, education related travel, by educational sector, by type of expenditure by year.

## ANALYSIS AND COMMENTS

### BALANCE ON GOODS AND SERVICES

The trend estimate<sup>1</sup> of the balance on goods and services was a deficit of \$502m in April 2010.

In seasonally adjusted terms, the balance on goods and services was a surplus of \$134m in April 2010, a turnaround of \$2,174m on the revised deficit in March 2010.

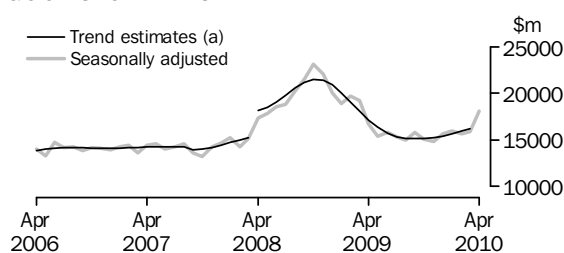
### EXPORTS OF GOODS AND SERVICES

The trend estimate<sup>1</sup> of goods and services credits was \$21,942m in April 2010.

In seasonally adjusted terms, goods and services credits rose \$2,191m (11%) to \$22,661m. Non-rural goods rose \$2,292m (18%) and net exports of goods under merchandising rose \$15m (65%). Rural goods fell \$67m (3%), non-monetary gold fell \$48m (4%), and services credits fell \$1m.

#### Exports of goods

### GOODS CREDITS



(a) Trend breaks of \$500m to April 2006, \$2,725m to April 2008 and \$800m to April 2010 have been applied.

### RURAL GOODS

In trend terms, exports of rural goods rose \$18m (1%) to \$2,137m.

In seasonally adjusted terms, exports of rural goods fell \$67m (3%) to \$2,076m.

The main component contributing to the fall in seasonally adjusted estimates was cereal grains and cereal preparations, down \$70m (15%).

Partly offsetting this decrease was the meat and meat preparations component, up \$26m (5%).

### NON-RURAL GOODS

In seasonally adjusted terms, exports of non-rural goods rose \$2,292m (18%) to \$14,778m.

The main components contributing to the rise in seasonally adjusted estimates were:

- metal ores and minerals, up \$1,011m (25%). In original terms<sup>2</sup>, the rise in metal ores and minerals was driven by iron ore and concentrates, up \$768m (32%) with volumes up 2% and prices up 29%.
- coal, coke and briquettes, up \$875m (40%). In original terms<sup>2</sup>, the coal, coke and briquettes component rose \$790m (35%) with volumes up 26% and prices up 7%.
- other mineral fuels, up \$259m (14%)
- metals (excl. non-monetary gold), up \$120m (13%)
- other non-rural (incl. sugar and beverages), up \$101m (10%).

<sup>1</sup> A trend break of \$800m was applied between March and April 2010. See page 2 'Iron ore prices' for details.

<sup>2</sup> Based on the merchandise trade series used to compile goods credits.

## ANALYSIS AND COMMENTS *continued*

### Exports of goods *continued*

#### NON-RURAL GOODS *continued*

Partly offsetting these increases were the other manufactures component, down \$39m (3%) and the transport equipment component, down \$30m (8%).

#### NET EXPORTS OF GOODS UNDER MERCHANTING

In trend terms, net exports of goods under merchanting rose \$4m (15%) to \$30m.

In seasonally adjusted terms, net exports of goods under merchanting rose \$15m (65%) to \$38m.

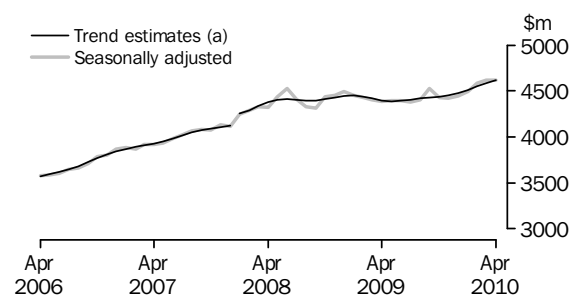
#### NON-MONETARY GOLD

In trend terms, exports of non-monetary gold rose \$17m (2%) to \$1,118m.

In seasonally adjusted terms, exports of non-monetary gold fell \$48m (4%) to \$1,154m.

### Exports of services

#### SERVICES CREDITS



(a) A trend break of \$106m has been applied to January 2008.

In trend terms, services credits rose \$37m (1%) to \$4,621m.

In seasonally adjusted terms, services credits fell \$1m to \$4,615m.

The main components contributing to the change in the seasonally adjusted estimates were travel services, down \$11m and transport services, up \$12m (2%).

In seasonally adjusted terms, tourism related services credits fell \$3m to \$3,132m.

### IMPORTS OF GOODS AND SERVICES

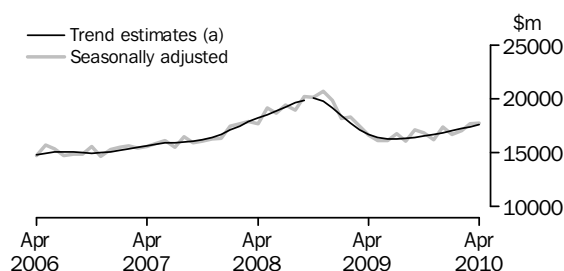
Between March 2010 and April 2010 the trend estimate of goods and services debits rose \$234m (1%) to \$22,444m.

In seasonally adjusted terms, goods and services debits rose \$17m to \$22,527m.

Non-monetary gold rose \$299m (50%), consumption goods rose \$151m (3%), and capital goods rose \$30m (1%). Intermediate and other merchandise goods fell \$439m (6%), and services debits fell \$24m.

Imports of goods

GOODS DEBITS



(a) A trend break of \$167m has been applied to Capital goods n.e.s. debits and related aggregates in October 2008.

CONSUMPTION GOODS

In trend terms, imports of consumption goods rose \$48m (1%) to \$5,280m.

In seasonally adjusted terms, imports of consumption goods rose \$151m (3%) to \$5,312m.

The main components contributing to the rise in the seasonally adjusted estimates were:

- non-industrial transport equipment, up \$134m (9%)
- consumption goods n.e.s., up \$29m (2%).

CAPITAL GOODS

In trend terms, imports of capital goods rose \$43m (1%) to \$4,122m.

In seasonally adjusted terms, imports of capital goods rose \$30m (1%) to \$4,110m.

The main components contributing to the rise in the seasonally adjusted estimates were:

- industrial transport equipment n.e.s., up \$35m (5%)
- machinery and industrial equipment, up \$34m (3%)
- telecommunications equipment, up \$20m (4%).

Partly offsetting these increases was the capital goods n.e.s component, down \$66m (6%).

INTERMEDIATE AND OTHER MERCHANDISE GOODS

In trend terms, imports of intermediate and other merchandise goods rose \$59m (1%) to \$7,569m.

In seasonally adjusted terms, imports of intermediate and other merchandise goods fell \$439m (6%) to \$7,429m.

The main components contributing to the fall in the seasonally adjusted estimates were:

- other merchandise goods, down \$263m (76%)
- other parts for capital goods, down \$252m (21%).

Partly offsetting these decreases was the fuels and lubricants component, up \$121m (5%).



## ANALYSIS AND COMMENTS *continued*

### *Imports of goods continued*

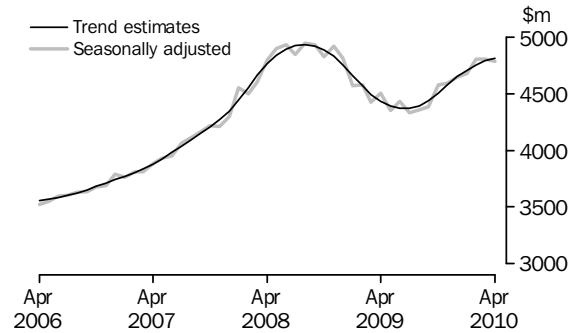
#### NON-MONETARY GOLD

In trend terms, imports of non-monetary gold rose \$63m (11%) to \$663m.

In seasonally adjusted terms, imports of non-monetary gold rose \$299m (50%) to \$894m.

### *Imports of services*

#### SERVICES DEBITS



In trend terms, services debits rose \$21m to \$4,810m.

In seasonally adjusted terms, services debits fell \$24m to \$4,782m.

The main components contributing to the fall in the seasonally adjusted estimates were:

- travel services, down \$16m (1%)
- transport services, down \$7m (1%).

Partly offsetting these increases was the other services component, up \$5m.

In seasonally adjusted terms, tourism related services debits fell \$25m (1%) to \$2,517m.

## GOODS AND SERVICES (a), Summary—Seasonally Adjusted and Trend Estimates

	May 2009	Jun 2009	Jul 2009	Aug 2009	Sep 2009	Oct 2009	Nov 2009	Dec 2009	Jan 2010	Feb 2010	Mar 2010	Apr 2010
	\$m	\$m	\$m	\$m	\$m	\$m	\$m	\$m	\$m	\$m	\$m	\$m
SEASONALLY ADJUSTED												
<b>BALANCE</b>												
<b>On goods and services</b>	<b>-651</b>	<b>-418</b>	<b>-1 380</b>	<b>-1 095</b>	<b>-1 248</b>	<b>-1 923</b>	<b>-1 587</b>	<b>-1 976</b>	<b>-934</b>	<b>-1 641</b>	<b>-2 040</b>	<b>134</b>
<b>CREDITS</b>												
Total goods and services	19 818	20 166	19 692	19 345	20 281	19 464	19 199	20 066	20 437	20 183	20 470	22 661
<b>Total goods</b>	<b>15 420</b>	<b>15 773</b>	<b>15 317</b>	<b>14 943</b>	<b>15 757</b>	<b>15 038</b>	<b>14 782</b>	<b>15 620</b>	<b>15 939</b>	<b>15 599</b>	<b>15 854</b>	<b>18 046</b>
Rural goods(b)	2 315	2 298	2 218	2 120	2 020	1 866	1 961	2 086	2 085	2 118	2 143	2 076
Non-rural goods(b)	12 102	12 309	12 226	11 948	12 319	12 002	11 681	12 443	12 591	12 564	12 486	14 778
Net exports of goods under merchandise(c)	25	25	39	39	41	15	15	15	23	23	23	38
Non-monetary gold(c)	978	1 141	835	836	1 378	1 155	1 125	1 076	1 240	894	1 202	1 154
<b>Total services</b>	<b>4 398</b>	<b>4 393</b>	<b>4 375</b>	<b>4 402</b>	<b>4 524</b>	<b>4 426</b>	<b>4 417</b>	<b>4 446</b>	<b>4 498</b>	<b>4 585</b>	<b>4 616</b>	<b>4 615</b>
<b>DEBITS</b>												
Total goods and services	-20 469	-20 584	-21 072	-20 440	-21 529	-21 387	-20 786	-22 042	-21 371	-21 825	-22 510	-22 527
<b>Total goods</b>	<b>-16 122</b>	<b>-16 151</b>	<b>-16 744</b>	<b>-16 083</b>	<b>-17 146</b>	<b>-16 809</b>	<b>-16 193</b>	<b>-17 399</b>	<b>-16 697</b>	<b>-17 024</b>	<b>-17 704</b>	<b>-17 745</b>
Consumption goods	-5 021	-5 183	-5 228	-4 920	-5 101	-5 015	-5 048	-4 968	-5 102	-5 346	-5 161	-5 312
Capital goods	-3 542	-3 666	-3 836	-3 922	-4 006	-4 054	-3 753	-4 007	-3 984	-4 027	-4 080	-4 110
Intermediate and other merchandise goods	-6 674	-6 956	-7 425	-6 686	-7 303	-7 068	-6 951	-7 758	-7 260	-7 183	-7 868	-7 429
Non-monetary gold(c)	-884	-346	-255	-555	-737	-672	-441	-665	-351	-467	-595	-894
<b>Total services</b>	<b>-4 347</b>	<b>-4 433</b>	<b>-4 328</b>	<b>-4 357</b>	<b>-4 383</b>	<b>-4 579</b>	<b>-4 593</b>	<b>-4 643</b>	<b>-4 674</b>	<b>-4 801</b>	<b>-4 806</b>	<b>-4 782</b>
TREND ESTIMATES (d)												
<b>BALANCE</b>												
<b>On goods and services</b>	<b>-86</b>	<b>-571</b>	<b>-953</b>	<b>-1 188</b>	<b>-1 305</b>	<b>-1 416</b>	<b>-1 517</b>	<b>-1 565</b>	<b>-1 561</b>	<b>-1 507</b>	<b>-1 424</b>	<b>-502</b>
<b>CREDITS</b>												
Total goods and services	20 718	20 094	19 681	19 521	19 550	19 617	19 714	19 898	20 160	20 470	20 786	21 942
<b>Total goods</b>	<b>16 328</b>	<b>15 699</b>	<b>15 275</b>	<b>15 103</b>	<b>15 122</b>	<b>15 179</b>	<b>15 260</b>	<b>15 418</b>	<b>15 649</b>	<b>15 921</b>	<b>16 201</b>	<b>17 321</b>
Rural goods(b)	2 391	2 290	2 182	2 087	2 022	1 991	1 995	2 025	2 065	2 096	2 119	2 137
Non-rural goods(b)(e)	12 627	12 285	12 069	11 986	12 005	12 040	12 102	12 238	12 447	12 696	12 955	14 036
Net exports of goods under merchandise	33	33	33	32	29	25	21	19	20	23	26	30
Non-monetary gold	1 278	1 091	990	998	1 066	1 123	1 142	1 136	1 117	1 106	1 101	1 118
<b>Total services</b>	<b>4 390</b>	<b>4 395</b>	<b>4 407</b>	<b>4 418</b>	<b>4 428</b>	<b>4 438</b>	<b>4 455</b>	<b>4 479</b>	<b>4 512</b>	<b>4 549</b>	<b>4 584</b>	<b>4 621</b>
<b>DEBITS</b>												
Total goods and services	-20 804	-20 665	-20 634	-20 709	-20 855	-21 033	-21 232	-21 463	-21 721	-21 977	-22 210	-22 444
<b>Total goods</b>	<b>-16 416</b>	<b>-16 297</b>	<b>-16 265</b>	<b>-16 318</b>	<b>-16 416</b>	<b>-16 529</b>	<b>-16 653</b>	<b>-16 815</b>	<b>-17 016</b>	<b>-17 226</b>	<b>-17 421</b>	<b>-17 634</b>
Consumption goods	-5 055	-5 100	-5 113	-5 082	-5 042	-5 028	-5 037	-5 075	-5 129	-5 184	-5 232	-5 280
Capital goods	-3 763	-3 701	-3 677	-3 691	-3 731	-3 782	-3 837	-3 901	-3 970	-4 031	-4 079	-4 122
Intermediate and other merchandise goods	-6 924	-6 953	-6 993	-7 044	-7 096	-7 155	-7 223	-7 302	-7 388	-7 458	-7 510	-7 569
Non-monetary gold	-673	-542	-482	-501	-547	-563	-556	-537	-528	-553	-600	-663
<b>Total services</b>	<b>-4 388</b>	<b>-4 368</b>	<b>-4 368</b>	<b>-4 391</b>	<b>-4 438</b>	<b>-4 504</b>	<b>-4 579</b>	<b>-4 648</b>	<b>-4 705</b>	<b>-4 751</b>	<b>-4 789</b>	<b>-4 810</b>
(a) For sign conventions, see paragraph 15 of the Explanatory Notes.												
(b) For all time periods, estimates for sugar, sugar preparations and honey are included in Non-rural goods.												
(c) This component is not seasonally adjusted.												
(d) Caution should be used when interpreting recent trend estimates as they may be affected by unusual economic factors. For more details on trend estimates, please see paragraph 19 of the explanatory notes.												
(e) A trend break of \$800m has been applied to Non-rural goods credits and related aggregates in April 2010. This trend break will be reassessed in the future issue.												

## GOODS AND SERVICES (a), Summary—Original

	May 2009	Jun 2009	Jul 2009	Aug 2009	Sep 2009	Oct 2009	Nov 2009	Dec 2009	Jan 2010	Feb 2010	Mar 2010	Apr 2010
	\$m	\$m	\$m	\$m	\$m	\$m	\$m	\$m	\$m	\$m	\$m	\$m
<b>BALANCE</b>												
<b>On goods and services</b>	<b>568</b>	<b>-615</b>	<b>-1 772</b>	<b>-257</b>	<b>-2 375</b>	<b>-2 599</b>	<b>-2 689</b>	<b>-1 942</b>	<b>-1 726</b>	<b>-459</b>	<b>-1 807</b>	<b>589</b>
<b>CREDITS</b>												
Total goods and services	19 979	19 648	19 759	19 765	20 327	20 432	19 041	20 882	18 895	19 272	21 105	22 350
<b>Total goods</b>	<b>15 684</b>	<b>15 588</b>	<b>15 349</b>	<b>15 253</b>	<b>15 989</b>	<b>15 817</b>	<b>14 614</b>	<b>16 514</b>	<b>14 525</b>	<b>14 590</b>	<b>16 289</b>	<b>17 616</b>
Rural goods(b)	2 487	2 223	2 129	2 085	1 985	1 890	1 900	2 203	1 854	2 076	2 382	2 090
Non-rural goods(b)	12 194	12 199	12 346	12 293	12 585	12 757	11 574	13 220	11 408	11 597	12 682	14 334
Net exports of goods under merchanting	25	25	39	39	41	15	15	15	23	23	23	38
Non-monetary gold	978	1 141	835	836	1 378	1 155	1 125	1 076	1 240	894	1 202	1 154
<b>Total services</b>	<b>4 295</b>	<b>4 060</b>	<b>4 410</b>	<b>4 512</b>	<b>4 338</b>	<b>4 615</b>	<b>4 427</b>	<b>4 368</b>	<b>4 370</b>	<b>4 682</b>	<b>4 816</b>	<b>4 734</b>
<b>DEBITS</b>												
Total goods and services	-19 411	-20 263	-21 531	-20 022	-22 702	-23 031	-21 730	-22 824	-20 621	-19 731	-22 912	-21 761
<b>Total goods</b>	<b>-15 278</b>	<b>-15 805</b>	<b>-16 997</b>	<b>-15 755</b>	<b>-18 023</b>	<b>-18 133</b>	<b>-17 274</b>	<b>-17 918</b>	<b>-15 653</b>	<b>-15 553</b>	<b>-18 357</b>	<b>-17 055</b>
Consumption goods	-4 542	-4 927	-5 410	-4 919	-5 568	-5 783	-5 599	-5 072	-4 598	-4 867	-5 195	-4 876
Capital goods	-3 448	-3 759	-3 851	-3 739	-4 183	-4 264	-4 177	-4 268	-3 604	-3 471	-4 304	-3 935
Intermediate and other merchandise goods	-6 404	-6 773	-7 481	-6 542	-7 535	-7 414	-7 057	-7 913	-7 100	-6 748	-8 263	-7 350
Non-monetary gold	-884	-346	-255	-555	-737	-672	-441	-665	-351	-467	-595	-894
<b>Total services</b>	<b>-4 133</b>	<b>-4 458</b>	<b>-4 534</b>	<b>-4 267</b>	<b>-4 679</b>	<b>-4 898</b>	<b>-4 456</b>	<b>-4 906</b>	<b>-4 968</b>	<b>-4 178</b>	<b>-4 555</b>	<b>-4 706</b>

(a) For sign conventions, see paragraph 15 of the Explanatory Notes.

(b) For all time periods, estimates for sugar, sugar preparations and honey are included in Non-rural goods.

							10 MONTHS ENDED APRIL		Change %
	2006-07	2007-08	2008-09	Feb 2010	Mar 2010	Apr 2010	2009	2010	
	\$m	\$m	\$m	\$m	\$m	\$m	\$m	\$m	
<b>Total goods credits</b>	<b>169 524</b>	<b>182 952</b>	<b>231 470</b>	<b>14 590</b>	<b>16 289</b>	<b>17 616</b>	<b>200 198</b>	<b>156 556</b>	<b>-21.8</b>
General merchandise	158 570	170 471	213 661	13 673	15 064	16 424	184 558	145 390	-21.2
<i>Rural goods(a)</i>	25 090	25 494	29 383	2 076	2 382	2 090	24 673	20 594	-16.5
Meat and meat preparations	7 080	6 542	7 454	442	557	544	6 289	5 078	-19.3
Cereal grains and cereal preparations	4 171	4 975	6 881	468	562	408	5 680	4 289	-24.5
Wool and sheepskins	3 065	2 796	2 322	221	273	212	1 984	1 877	-5.4
Other rural(a)	10 774	11 181	12 726	945	990	926	10 720	9 350	-12.8
<i>Non-rural goods(a)</i>	133 480	144 977	184 278	11 597	12 682	14 334	159 885	124 796	-21.9
Metal ores and minerals	35 315	41 339	51 921	3 751	4 083	4 901	44 658	38 777	-13.2
Coal, coke and briquettes	21 928	24 599	54 957	2 367	2 243	3 033	48 779	27 661	-43.3
Other mineral fuels	15 641	18 889	20 707	1 475	1 739	1 979	18 238	15 424	-15.4
Metals (excl. non-monetary gold)	14 821	14 039	12 394	764	904	1 006	10 583	8 626	-18.5
Machinery	8 391	8 750	8 900	629	699	628	7 554	6 543	-13.4
Transport equipment	4 651	5 723	5 090	354	392	321	4 620	3 393	-26.6
Other manufactures	16 241	16 965	17 601	1 248	1 497	1 226	14 789	13 491	-8.8
Other non-rural (incl. sugar and beverages)	15 113	13 126	11 077	894	1 007	1 128	9 227	9 748	5.6
Goods procured in ports by carriers	1 379	1 547	1 631	115	118	112	1 437	1 133	-21.2
Net exports of goods under merchanting	214	209	301	23	23	38	251	271	8.0
Goods acquired under merchanting (negative exports)	-1 303	-1 528	-2 386	-151	-150	-182	-2 092	-1 548	26.0
Goods sold under merchanting	1 517	1 737	2 687	174	173	220	2 343	1 819	-22.4
Non-monetary gold	10 740	12 272	17 508	894	1 202	1 154	15 389	10 895	-29.2

(a) For all time periods, estimates for sugar, sugar preparations and honey are included in Other non-rural.

## GOODS DEBITS(a), Original

							10 MONTHS ENDED APRIL		Change
	2006-07	2007-08	2008-09	Feb 2010	Mar 2010	Apr 2010	2009	2010	
	\$m	\$m	\$m	\$m	\$m	\$m	\$m	\$m	
<b>Total goods debits</b>	<b>-183 572</b>	<b>-204 846</b>	<b>-222 378</b>	<b>-15 553</b>	<b>-18 357</b>	<b>-17 055</b>	<b>-191 295</b>	<b>-170 718</b>	<b>10.8</b>
General merchandise	-178 261	-197 253	-210 856	-15 086	-17 762	-16 161	-181 003	-165 086	8.8
Consumption goods	-54 913	-59 371	-61 419	-4 867	-5 195	-4 876	-51 950	-51 887	0.1
Food and beverages, mainly for consumption	-7 182	-7 840	-8 857	-610	-706	-632	-7 545	-7 351	2.6
Household electrical items	-4 525	-5 051	-5 488	-351	-320	-380	-4 520	-4 595	-1.7
Non-industrial transport equipment	-14 894	-16 872	-13 247	-1 327	-1 639	-1 471	-11 241	-13 307	-18.4
Textiles, clothing and footwear	-6 805	-7 051	-8 287	-744	-622	-598	-7 205	-6 389	11.3
Toys, books and leisure goods	-4 328	-4 561	-5 277	-300	-321	-315	-4 395	-3 889	11.5
Consumption goods n.e.s.	-17 179	-17 996	-20 263	-1 535	-1 587	-1 480	-17 044	-16 356	4.0
Capital goods	-41 774	-45 299	-51 457	-3 471	-4 304	-3 935	-44 250	-39 796	10.1
Machinery and industrial equipment	-15 330	-16 480	-18 488	-1 172	-1 326	-1 234	-16 026	-12 876	19.7
ADP equipment	-7 008	-7 074	-7 257	-541	-677	-676	-6 088	-6 057	0.5
Telecommunications equipment	-5 315	-5 790	-6 431	-353	-539	-499	-5 402	-4 990	7.6
Civil aircraft(b)	-1 667	-2 691	na	na	na	na	na	na	na
Industrial transport equipment n.e.s.	-6 463	-7 502	-6 527	-553	-728	-658	-5 877	-5 500	6.4
Capital goods n.e.s.(b)	-5 991	-5 762	-11 230	-852	-1 034	-868	-9 333	-10 373	-11.1
Intermediate and other merchandise goods	-81 574	-92 583	-97 980	-6 748	-8 263	-7 350	-84 803	-73 403	13.4
Food and beverages, mainly for industry	-819	-923	-1 186	-73	-103	-86	-1 018	-868	14.7
Primary industrial supplies n.e.s.	-1 552	-1 477	-1 901	-96	-134	-115	-1 701	-1 128	33.7
Fuels and lubricants	-21 470	-29 772	-28 213	-2 051	-2 314	-2 435	-24 431	-21 939	10.2
Parts for transport equipment	-8 355	-8 837	-8 599	-655	-739	-674	-7 449	-6 820	8.4
Parts for ADP equipment	-1 620	-1 115	-1 067	-78	-86	-76	-897	-786	12.4
Other parts for capital goods	-11 780	-11 990	-14 312	-945	-1 280	-978	-11 990	-11 451	4.5
Organic and inorganic chemicals	-4 406	-4 673	-5 384	-348	-407	-306	-4 652	-3 568	23.3
Paper and paperboard	-2 368	-2 359	-2 403	-180	-200	-184	-2 105	-1 920	8.8
Textile yarn and fabrics	-1 366	-1 334	-1 344	-91	-93	-86	-1 159	-985	15.0
Iron and steel	-3 817	-3 721	-5 528	-281	-305	-294	-5 041	-2 655	47.3
Plastics	-2 957	-3 064	-3 028	-206	-240	-232	-2 640	-2 255	14.6
Processed industrial supplies n.e.s.	-17 997	-20 132	-21 919	-1 540	-1 876	-1 688	-18 946	-16 602	12.4
Other merchandise goods(b)	-1 619	-1 415	-1 516	-66	-348	-85	-1 355	-1 235	8.9
Goods procured in ports by carriers	-1 448	-1 771	-1 580	-138	-138	-111	-1 419	-1 191	16.1
Non-monetary gold	-5 311	-7 593	-11 522	-467	-595	-894	-10 292	-5 632	45.3

na not available

(a) For sign conventions, see paragraph 15 of the Explanatory Notes.

(b) From December 2008, the Civil aircraft series and commodities subject to a 'no commodity details' or 'no value details' restriction are included in Capital goods n.e.s.. From September to November 2008 commodities with these restrictions are included in Civil aircraft and for earlier periods are included in Other merchandise goods.

## GOODS CREDITS, Seasonally Adjusted

	Jul 2009	Aug 2009	Sep 2009	Oct 2009	Nov 2009	Dec 2009	Jan 2010	Feb 2010	Mar 2010	Apr 2010
	\$m	\$m	\$m	\$m	\$m	\$m	\$m	\$m	\$m	\$m
<b>Total goods credits</b>	<b>15 317</b>	<b>14 943</b>	<b>15 757</b>	<b>15 038</b>	<b>14 782</b>	<b>15 620</b>	<b>15 939</b>	<b>15 599</b>	<b>15 854</b>	<b>18 046</b>
General merchandise	14 443	14 068	14 338	13 868	13 642	14 529	14 676	14 682	14 629	16 854
<i>Rural goods</i>	2 218	2 120	2 020	1 866	1 961	2 086	2 085	2 118	2 143	2 076
Meat and meat preparations	553	550	504	497	476	501	497	485	520	546
Cereal grains and cereal preparations	518	493	430	389	408	399	451	405	452	382
Wool and sheepskins	159	161	161	181	209	188	194	203	209	202
Other rural (a)	988	915	924	798	869	997	944	1 024	962	946
<i>Non-rural goods</i>	12 226	11 948	12 319	12 002	11 681	12 443	12 591	12 564	12 486	14 778
Metal ores and minerals	3 659	3 652	3 743	3 495	3 702	3 668	3 933	3 972	4 023	5 034
Coal, coke and briquettes(b)	3 025	2 767	3 027	2 675	2 565	2 949	2 829	2 573	2 202	3 077
Other mineral fuels(c)	1 338	1 333	1 262	1 469	1 366	1 513	1 470	1 627	1 847	2 106
Metals (excl. non-monetary gold)(c)	818	858	848	905	727	926	898	873	903	1 023
Machinery	672	645	669	652	644	640	645	661	657	651
Transport equipment	303	348	323	326	341	310	337	380	380	350
Other manufactures	1 392	1 359	1 346	1 355	1 331	1 343	1 340	1 341	1 370	1 331
Other non-rural (incl. sugar and beverages)	911	885	991	1 022	896	976	1 021	1 020	986	1 087
Goods procured in ports by carriers(c)	108	101	110	105	109	117	119	118	118	120
Net exports of goods under merchanting(d)	39	39	41	15	15	15	23	23	23	38
Non-monetary gold(d)	835	836	1 378	1 155	1 125	1 076	1 240	894	1 202	1 154

(a) For all time periods, estimates for sugar, sugar preparations and honey are included in Other non-rural.

(b) Only a length-of-month adjustment has been applied to this component.

(c) In using these seasonally adjusted series, care should be exercised because of the difficulties associated with reliably estimating the seasonal pattern.

(d) This component is not seasonally adjusted.

## GOODS DEBITS(a), Seasonally Adjusted

	Jul 2009	Aug 2009	Sep 2009	Oct 2009	Nov 2009	Dec 2009	Jan 2010	Feb 2010	Mar 2010	Apr 2010
	\$m	\$m	\$m	\$m	\$m	\$m	\$m	\$m	\$m	\$m
<b>Total goods debits</b>	<b>-16 744</b>	<b>-16 083</b>	<b>-17 146</b>	<b>-16 809</b>	<b>-16 193</b>	<b>-17 399</b>	<b>-16 697</b>	<b>-17 024</b>	<b>-17 704</b>	<b>-17 745</b>
General merchandise	-16 489	-15 528	-16 409	-16 137	-15 752	-16 734	-16 346	-16 557	-17 109	-16 851
Consumption goods	-5 228	-4 920	-5 101	-5 015	-5 048	-4 968	-5 102	-5 346	-5 161	-5 312
Food and beverages, mainly for consumption	-781	-757	-735	-729	-678	-715	-707	-689	-708	-686
Household electrical items	-514	-503	-475	-415	-469	-462	-430	-429	-396	-403
Non-industrial transport equipment	-1 114	-1 035	-1 242	-1 273	-1 334	-1 335	-1 357	-1 539	-1 489	-1 623
Textiles, clothing and footwear	-674	-629	-620	-593	-579	-500	-642	-641	-635	-625
Toys, books and leisure goods	-430	-420	-393	-398	-385	-360	-355	-379	-366	-378
Consumption goods n.e.s.	-1 715	-1 576	-1 636	-1 607	-1 603	-1 596	-1 611	-1 669	-1 568	-1 597
Capital goods	-3 836	-3 922	-4 006	-4 054	-3 753	-4 007	-3 984	-4 027	-4 080	-4 110
Machinery and industrial equipment	-1 336	-1 269	-1 301	-1 198	-1 355	-1 214	-1 142	-1 372	-1 249	-1 283
ADP equipment	-667	-604	-553	-593	-564	-590	-640	-657	-639	-647
Telecommunications equipment	-510	-506	-523	-491	-490	-504	-497	-435	-496	-516
Civil aircraft(b)(c)	na	na	na	na	na	na	na	na	na	na
Industrial transport equipment n.e.s.	-429	-412	-524	-496	-540	-552	-528	-628	-672	-707
Capital goods n.e.s.(b)	-894	-1 132	-1 105	-1 276	-803	-1 148	-1 176	-935	-1 023	-957
Intermediate and other merchandise goods	-7 425	-6 686	-7 303	-7 068	-6 951	-7 758	-7 260	-7 183	-7 868	-7 429
Food and beverages, mainly for industry	-93	-99	-78	-81	-81	-88	-65	-84	-100	-89
Primary industrial supplies n.e.s.(d)	-83	-120	-105	-79	-115	-123	-102	-120	-124	-130
Fuels and lubricants(c)	-2 426	-1 794	-2 241	-2 025	-2 093	-2 633	-1 927	-2 051	-2 314	-2 435
Parts for transport equipment	-591	-622	-767	-686	-617	-671	-738	-701	-693	-674
Parts for ADP equipment	-95	-74	-60	-78	-76	-80	-91	-91	-76	-80
Other parts for capital goods	-1 168	-1 133	-1 146	-1 171	-1 093	-1 232	-1 182	-1 095	-1 206	-954
Organic and inorganic chemicals	-368	-355	-331	-373	-381	-367	-349	-336	-367	-325
Paper and paperboard	-172	-175	-187	-184	-186	-194	-197	-196	-192	-204
Textile yarn and fabrics	-101	-107	-102	-101	-94	-92	-96	-100	-93	-93
Iron and steel	-278	-265	-248	-204	-225	-254	-251	-292	-292	-297
Plastics	-233	-214	-210	-219	-213	-217	-219	-232	-238	-241
Processed industrial supplies n.e.s.	-1 629	-1 551	-1 596	-1 620	-1 600	-1 621	-1 711	-1 681	-1 688	-1 711
Other merchandise goods(b)(e)	-75	-62	-115	-139	-69	-81	-195	-66	-348	-85
Goods procured in ports by carriers(c)	-114	-114	-117	-108	-108	-105	-138	-138	-138	-111
Non-monetary gold(c)	-255	-555	-737	-672	-441	-665	-351	-467	-595	-894

na not available

(a) For sign conventions, see paragraph 15 of the Explanatory Notes.

(b) From December 2008, the Civil aircraft series and commodities subject to a 'no commodity details' or 'no value details' restriction are included in Capital goods n.e.s.. From September to November 2008 commodities with these restrictions are included in Civil aircraft and for earlier periods are included in Other merchandise goods.

(c) This component is not seasonally adjusted.

(d) In using these seasonally adjusted series, care should be exercised because of the difficulties associated with reliably estimating the seasonal pattern.

(e) From July 1981, this component is not seasonally adjusted.

## GOODS CREDITS(a), Trend Estimates

	Jul 2009	Aug 2009	Sep 2009	Oct 2009	Nov 2009	Dec 2009	Jan 2010	Feb 2010	Mar 2010	Apr 2010
	\$m	\$m	\$m	\$m	\$m	\$m	\$m	\$m	\$m	\$m
<b>Total goods credits</b>	<b>15 275</b>	<b>15 103</b>	<b>15 122</b>	<b>15 179</b>	<b>15 260</b>	<b>15 418</b>	<b>15 649</b>	<b>15 921</b>	<b>16 201</b>	<b>17 321</b>
General merchandise	14 251	14 073	14 027	14 031	14 097	14 264	14 511	14 792	15 074	16 173
<i>Rural goods</i>	2 182	2 087	2 022	1 991	1 995	2 025	2 065	2 096	2 119	2 137
Meat and meat preparations	543	528	515	501	492	491	496	505	515	524
Cereal grains and cereal preparations	527	480	443	420	410	411	416	419	419	419
Wool and sheepskins	161	165	171	180	188	195	199	202	204	205
Other rural(b)	950	914	893	890	905	929	953	971	981	989
<i>Non-rural goods</i>	12 069	11 986	12 005	12 040	12 102	12 238	12 447	12 696	12 955	14 036
Metal ores and minerals(c)	3 633	3 607	3 614	3 640	3 686	3 760	3 855	3 956	4 051	4 951
Coal, coke and briquettes	2 953	2 857	2 820	2 790	2 752	2 713	2 684	2 665	2 657	2 681
Other mineral fuels	1 299	1 318	1 343	1 366	1 407	1 478	1 576	1 690	1 810	1 916
Metals (excl. non-monetary gold)	841	843	845	846	851	863	882	906	932	956
Machinery	666	659	655	651	648	648	649	651	653	655
Transport equipment	290	309	322	331	334	338	346	355	363	368
Other manufactures	1 378	1 365	1 355	1 346	1 341	1 341	1 343	1 345	1 346	1 346
Other non-rural (incl. sugar and beverages)	908	924	945	961	972	983	995	1 011	1 026	1 043
Goods procured in ports by carriers	102	103	106	109	111	114	116	118	119	121
Net exports of goods under merchanting	33	32	29	25	21	19	20	23	26	30
Non-monetary gold	990	998	1 066	1 123	1 142	1 136	1 117	1 106	1 101	1 118

(a) Caution should be used when interpreting recent trend estimates as they may be affected by unusual economic factors. For more details on trend estimates, please see paragraph 19 of the explanatory notes.

(b) For all time periods, estimates for sugar, sugar preparations and honey are included in Other non-rural.

(c) An estimated trend correction of \$800m has been applied to Metal ores and minerals and related aggregates in April 2010. This trend break will be reassessed in the future issue.



	Jul 2009	Aug 2009	Sep 2009	Oct 2009	Nov 2009	Dec 2009	Jan 2010	Feb 2010	Mar 2010	Apr 2010
	\$m	\$m	\$m	\$m	\$m	\$m	\$m	\$m	\$m	\$m
<b>Total goods debits</b>	<b>-16 265</b>	<b>-16 318</b>	<b>-16 416</b>	<b>-16 529</b>	<b>-16 653</b>	<b>-16 815</b>	<b>-17 016</b>	<b>-17 226</b>	<b>-17 421</b>	<b>-17 634</b>
General merchandise	-15 784	-15 816	-15 869	-15 965	-16 097	-16 278	-16 488	-16 673	-16 822	-16 971
Consumption goods	-5 113	-5 082	-5 042	-5 028	-5 037	-5 075	-5 129	-5 184	-5 232	-5 280
Food and beverages, mainly for consumption	-756	-749	-737	-725	-712	-704	-700	-698	-695	-694
Household electrical items	-512	-498	-479	-463	-451	-442	-433	-423	-414	-406
Non-industrial transport equipment	-1 077	-1 142	-1 199	-1 254	-1 306	-1 361	-1 417	-1 472	-1 522	-1 569
Textiles, clothing and footwear	-657	-632	-606	-590	-582	-586	-598	-613	-626	-638
Toys, books and leisure goods	-432	-418	-403	-390	-379	-372	-369	-367	-368	-368
Consumption goods n.e.s.	-1 678	-1 644	-1 618	-1 608	-1 607	-1 609	-1 612	-1 611	-1 607	-1 605
Capital goods	-3 677	-3 691	-3 731	-3 782	-3 837	-3 901	-3 970	-4 031	-4 079	-4 122
Machinery and industrial equipment	-1 302	-1 280	-1 270	-1 263	-1 253	-1 250	-1 254	-1 261	-1 268	-1 278
ADP equipment	-589	-590	-588	-587	-591	-602	-619	-635	-648	-655
Telecommunications equipment	-510	-506	-505	-501	-495	-489	-485	-485	-486	-491
Civil aircraft(c)	na	na	na	na	na	na	na	na	na	na
Industrial transport equipment n.e.s.	-393	-436	-475	-505	-528	-553	-583	-616	-649	-681
Capital goods n.e.s.(c)	np	np	np	np	np	np	np	np	np	np
Intermediate and other merchandise goods	-6 993	-7 044	-7 096	-7 155	-7 223	-7 302	-7 388	-7 458	-7 510	-7 569
Food and beverages, mainly for industry	-90	-88	-86	-83	-80	-80	-82	-84	-87	-90
Primary industrial supplies n.e.s.	-102	-103	-102	-104	-106	-110	-114	-119	-123	-127
Fuels and lubricants	-2 042	-2 102	-2 142	-2 157	-2 163	-2 177	-2 202	-2 227	-2 253	-2 298
Parts for transport equipment	-630	-645	-662	-678	-687	-690	-691	-693	-693	-697
Parts for ADP equipment	-78	-76	-75	-75	-78	-81	-83	-85	-85	-83
Other parts for capital goods	-1 164	-1 153	-1 148	-1 154	-1 163	-1 164	-1 155	-1 135	-1 109	-1 080
Organic and inorganic chemicals	-366	-364	-361	-361	-362	-361	-357	-352	-346	-338
Paper and paperboard	-172	-176	-180	-185	-189	-192	-194	-196	-198	-199
Textile yarn and fabrics	-101	-100	-100	-99	-98	-96	-95	-95	-94	-94
Iron and steel	-262	-249	-239	-233	-236	-245	-260	-275	-288	-301
Plastics	-215	-215	-215	-215	-216	-219	-224	-229	-234	-238
Processed industrial supplies n.e.s.	-1 582	-1 581	-1 590	-1 604	-1 622	-1 643	-1 664	-1 683	-1 698	-1 709
Other merchandise goods(c)	-90	-87	-86	-94	-108	-124	-142	-159	-172	-182
Goods procured in ports by carriers	-100	-106	-110	-113	-116	-120	-124	-128	-130	-131
Non-monetary gold	-482	-501	-547	-563	-556	-537	-528	-553	-600	-663

na not available

np not available for publication but included in totals where applicable, unless otherwise indicated

(a) For sign conventions, see paragraph 15 of the Explanatory Notes.

(b) Caution should be used when interpreting recent trend estimates as they may be affected by unusual economic factors. For more details on trend estimates, please see paragraph 19 of the explanatory notes.

(c) From December 2008, the Civil aircraft series and commodities subject to a 'no commodity details' or 'no value details' restriction are included in Capital goods n.e.s.. From September to November 2008 commodities with these restrictions are included in Civil aircraft and for earlier periods are included in Other merchandise goods. Trend estimates for the Capital goods n.e.s. series from December 2008 have been suppressed due to the change in the composition of the series.

							10 MONTHS ENDED APRIL		Change
	2006-07	2007-08	2008-09	Feb 2010	Mar 2010	Apr 2010	2009	2010	
	\$m	\$m	\$m	\$m	\$m	\$m	\$m	\$m	
<b>Services credits</b>	<b>45 956</b>	<b>50 645</b>	<b>52 873</b>	<b>4 682</b>	<b>4 816</b>	<b>4 734</b>	<b>44 518</b>	<b>45 272</b>	<b>1.7</b>
Manufacturing services on physical inputs owned by others	121	77	258	24	24	24	203	258	27.1
Maintenance and repair services n.i.e.	90	103	86	4	4	3	78	51	-34.6
Transport	8 546	9 129	7 342	562	554	539	6 399	5 490	-14.2
Passenger(c)	4 237	4 118	3 410	248	239	214	3 026	2 276	-24.8
Freight	765	1 463	851	45	46	62	750	518	-30.9
Other	2 348	2 595	2 127	187	187	182	1 802	1 841	2.2
Postal and courier services(d)	1 196	953	954	82	82	81	821	855	4.1
Travel	25 161	28 252	31 096	3 009	3 146	3 012	26 005	28 613	10.0
Other services	12 038	13 084	14 091	1 083	1 088	1 156	11 833	10 860	-8.2
<b>Services debits</b>	<b>-45 139</b>	<b>-53 330</b>	<b>-56 172</b>	<b>-4 178</b>	<b>-4 555</b>	<b>-4 706</b>	<b>-47 581</b>	<b>-46 147</b>	<b>3.0</b>
Manufacturing services on physical inputs owned by others	-3	-7	-4	-1	—	—	-4	-6	-50.0
Maintenance and repair services n.i.e.	-131	-97	-193	-53	-20	-14	-154	-227	-47.4
Transport	-15 732	-16 797	-15 832	-1 069	-1 264	-1 173	-13 827	-11 485	16.9
Passenger(c)	-6 876	-7 278	-5 835	-401	-481	-452	-5 032	-4 397	12.6
Freight	-8 303	-8 923	-9 386	-631	-746	-681	-8 282	-6 670	19.5
Other	-385	-417	-437	-25	-25	-25	-368	-262	28.8
Postal and courier services(d)	-168	-179	-174	-12	-12	-15	-145	-156	-7.6
Travel	-15 934	-20 153	-22 082	-1 577	-1 803	-2 017	-18 537	-20 256	-9.3
Other services	-13 339	-16 276	-18 061	-1 478	-1 468	-1 502	-15 059	-14 173	5.9
<b>Memorandum items:</b>									
Tourism related service credits(e)	29 398	32 370	34 506	3 257	3 385	3 226	29 031	30 889	6.4
Tourism related service debits(e)	-22 810	-27 431	-27 917	-1 978	-2 284	-2 469	-23 569	-24 653	-4.6

— nil or rounded to zero (including null cells)

(a) For sign conventions, see paragraph 15 of the Explanatory Notes.

(b) For more detailed trade in services components, see table 11.

(c) Passenger services includes agency fees and commissions for air transport.

(d) Postal and courier services includes indirect commissions for sea transport.

(e) For a more detailed explanation of tourism related services, see paragraph 27 of the Explanatory Notes.

	Jul 2009	Aug 2009	Sep 2009	Oct 2009	Nov 2009	Dec 2009	Jan 2010	Feb 2010	Mar 2010	Apr 2010
	\$m	\$m	\$m	\$m	\$m	\$m	\$m	\$m	\$m	\$m
SEASONALLY ADJUSTED										
<b>Services credits</b>	<b>4 375</b>	<b>4 402</b>	<b>4 524</b>	<b>4 426</b>	<b>4 417</b>	<b>4 446</b>	<b>4 498</b>	<b>4 585</b>	<b>4 616</b>	<b>4 615</b>
Manufacturing services on physical inputs owned by others(b)	28	24	20	32	28	27	27	24	24	24
Maintenance and repair services n.i.e.(b)	5	9	7	5	4	5	5	4	4	3
Transport	518	518	529	549	551	551	553	552	544	556
Passenger(c)	218	215	224	223	224	220	220	221	217	225
Freight(d)	54	53	52	50	51	50	49	48	46	63
Other(d)	169	172	172	187	188	191	192	194	193	182
Postal and courier services(e)	78	78	82	88	88	89	90	88	88	86
Travel	2 740	2 765	2 873	2 787	2 778	2 807	2 801	2 887	2 918	2 907
Other services	1 083	1 086	1 094	1 053	1 056	1 057	1 112	1 117	1 126	1 125
<b>Services debits</b>	<b>-4 328</b>	<b>-4 357</b>	<b>-4 383</b>	<b>-4 579</b>	<b>-4 593</b>	<b>-4 643</b>	<b>-4 674</b>	<b>-4 801</b>	<b>-4 806</b>	<b>-4 782</b>
Manufacturing services on physical inputs owned by others(b)	—	-1	—	-1	—	-2	-1	-1	—	—
Maintenance and repair services n.i.e.(b)	-17	-18	-20	-17	-21	-32	-15	-53	-20	-14
Transport	-1 057	-1 032	-1 061	-1 150	-1 138	-1 178	-1 150	-1 190	-1 226	-1 219
Passenger(c)	-393	-388	-394	-448	-466	-482	-462	-467	-479	-470
Freight	-622	-602	-625	-659	-629	-655	-646	-681	-706	-708
Other(b)	-28	-28	-28	-26	-26	-26	-25	-25	-25	-25
Postal and courier services(e)	-14	-14	-14	-17	-17	-15	-17	-17	-16	-16
Travel	-1 907	-1 945	-1 935	-2 020	-2 034	-2 027	-2 043	-2 064	-2 063	-2 047
Other services	-1 347	-1 361	-1 366	-1 391	-1 401	-1 404	-1 465	-1 493	-1 497	-1 502
<b>Memorandum items:</b>										
Tourism related service credits(f)	2 958	2 980	3 097	3 011	3 002	3 027	3 021	3 109	3 135	3 132
Tourism related service debits(f)	-2 300	-2 334	-2 329	-2 467	-2 500	-2 509	-2 506	-2 531	-2 542	-2 517

## TREND ESTIMATES

<b>Services credits</b>	<b>4 407</b>	<b>4 418</b>	<b>4 428</b>	<b>4 438</b>	<b>4 455</b>	<b>4 479</b>	<b>4 512</b>	<b>4 549</b>	<b>4 584</b>	<b>4 621</b>
Manufacturing services on physical inputs owned by others	26	26	26	27	27	27	26	25	25	23
Maintenance and repair services n.i.e.	6	6	6	6	5	5	4	4	4	4
Transport	516	522	531	540	547	550	552	552	552	551
Passenger(c)	221	219	220	221	221	222	221	221	221	221
Freight	52	52	52	51	50	50	50	51	52	53
Other	168	172	177	183	187	190	192	192	191	190
Postal and courier services(e)	75	79	82	86	88	89	89	89	88	88
Travel	2 770	2 785	2 792	2 797	2 805	2 818	2 837	2 861	2 885	2 911
Other services	1 089	1 080	1 072	1 068	1 070	1 079	1 093	1 107	1 119	1 132
<b>Services debits</b>	<b>-4 368</b>	<b>-4 391</b>	<b>-4 438</b>	<b>-4 504</b>	<b>-4 579</b>	<b>-4 648</b>	<b>-4 705</b>	<b>-4 751</b>	<b>-4 789</b>	<b>-4 810</b>
Manufacturing services on physical inputs owned by others	—	—	-1	-1	-1	-1	-1	-1	-1	—
Maintenance and repair services n.i.e.	-18	-18	-19	-21	-24	-26	-28	-28	-27	-25
Transport	-1 049	-1 060	-1 081	-1 109	-1 136	-1 159	-1 178	-1 194	-1 208	-1 217
Passenger(c)	-391	-399	-415	-435	-453	-464	-471	-474	-476	-474
Freight	-613	-617	-624	-632	-642	-652	-665	-678	-691	-702
Other	-30	-29	-27	-26	-26	-26	-25	-25	-25	-25
Postal and courier services(e)	-15	-15	-15	-16	-16	-16	-16	-16	-16	-16
Travel	-1 901	-1 935	-1 967	-1 995	-2 019	-2 035	-2 046	-2 054	-2 060	-2 059
Other services	-1 400	-1 379	-1 371	-1 379	-1 399	-1 427	-1 452	-1 475	-1 494	-1 508
<b>Memorandum items:</b>										
Tourism related service credits(f)	2 991	3 004	3 012	3 018	3 027	3 040	3 058	3 082	3 105	3 132
Tourism related service debits(f)	-2 292	-2 333	-2 382	-2 430	-2 471	-2 500	-2 518	-2 528	-2 535	-2 533

— nil or rounded to zero (including null cells)

(a) For sign conventions, see paragraph 15 of the Explanatory Notes.

(b) This component is not seasonally adjusted.

(c) Passenger services includes agency fees and commissions for air transport.

(d) In using these seasonally adjusted series, care should be exercised because of the difficulties associated with reliably estimating the seasonal pattern.

(e) Postal and courier services includes indirect commissions for sea transport.

(f) For a more detailed explanation of tourism related services, see paragraph 27 of the Explanatory Notes.

	CREDITS				DEBITS			
	Jun Qtr	Sep Qtr	Dec Qtr	Mar Qtr	Jun Qtr	Sep Qtr	Dec Qtr	Mar Qtr
	2009	2009	2009	2010	2009	2009	2009	2010
	\$m	\$m	\$m	\$m	\$m	\$m	\$m	\$m
<b>Services</b>	<b>12 850</b>	<b>13 260</b>	<b>13 410</b>	<b>13 868</b>	<b>-12 979</b>	<b>-13 480</b>	<b>-14 260</b>	<b>-13 701</b>
Manufacturing services on physical inputs owned by others	86	72	87	75	—	-1	-3	-2
Maintenance and repair services n.i.e.	12	21	14	13	-47	-55	-70	-88
Transport	1 455	1 578	1 678	1 695	-3 111	-3 207	-3 705	-3 400
Passenger(b)	616	611	699	752	-1 232	-1 212	-1 423	-1 310
Freight	151	164	156	136	-1 732	-1 844	-2 166	-1 979
Other	488	521	577	561	-104	-84	-78	-75
Postal and courier services(c)	200	282	246	246	-43	-67	-38	-36
Travel	7 911	8 434	8 337	8 830	-5 341	-6 220	-6 212	-5 807
Business	644	693	663	792	-717	-768	-768	-847
Personal	7 267	7 741	7 674	8 038	-4 624	-5 452	-5 444	-4 960
Education-related	4 518	4 972	4 278	4 642	-168	-263	-215	-218
Other(d)	2 749	2 769	3 396	3 396	-4 456	-5 189	-5 229	-4 742
Construction	12	47	27	24	—	—	—	—
Insurance and pension services	58	76	75	61	-137	-123	-134	-126
Financial services	302	314	289	390	-181	-155	-183	-216
Charges for the use of intellectual property n.i.e.	273	213	252	266	-906	-891	-924	-907
Telecommunications, computer and information services	513	461	430	390	-560	-511	-510	-512
Telecommunication services	63	62	70	74	-139	-122	-126	-160
Computer and information services	450	399	360	316	-421	-389	-384	-352
Computer services	362	315	297	257	-358	-327	-316	-277
Information services	12	8	8	6	-10	-5	-9	-6
Other services	76	76	55	53	-53	-57	-59	-69
Other business services	1 815	1 640	1 829	1 702	-2 142	-1 799	-1 979	-1 832
Research and development services	146	130	158	125	-60	-55	-67	-58
Professional and management consulting services	880	773	828	746	-977	-710	-860	-824
Legal, accounting, management consulting, public relations and other professional services	789	685	733	656	-930	-682	-821	-784
Advertising, market research and public opinion polling	91	88	95	90	-47	-28	-39	-40
Technical, trade-related and other business services	789	737	843	831	-1 105	-1 034	-1 052	-950
Architectural, engineering and other technical services	340	383	407	402	-431	-379	-447	-369
Waste treatment and de-pollution, agricultural and mining services	59	52	54	52	-186	-142	-150	-121
Operational leasing services	63	75	90	92	-187	-196	-196	-192
Trade-related commission services	220	123	174	153	-57	-56	-54	-43
Other business services n.i.e.	107	104	118	132	-244	-261	-205	-225
Personal, cultural and recreational services	196	194	182	206	-314	-296	-318	-589
Audiovisual and related services	24	28	32	68	-287	-266	-281	-435
Other personal, cultural and recreational services	172	166	150	138	-27	-30	-37	-154
Government goods and services n.i.e.	217	210	210	216	-240	-222	-222	-222
<b>Memorandum items:</b>								
Gross insurance premiums receivable / payable	165	171	179	158	-245	-249	-263	-256
Gross insurance claims payable / receivable	-123	-117	-121	-108	275	278	288	284
Tourism related services(e)	8 527	9 045	9 036	9 582	-6 573	-7 432	-7 635	-7 117

— nil or rounded to zero (including null cells)

(a) For sign conventions, see paragraph 15 of the Explanatory Notes.

(b) Passenger services includes agency fees and commissions for air transport.

(c) Postal and courier services includes indirect commissions for sea transport.

(d) Other personal travel includes health-related travel.

(e) For a more detailed explanation of tourism related services, see paragraph 27 of the Explanatory Notes.

				Per cent of total merchandise exports(b)	10 MONTHS ENDED APRIL	
	Feb	Mar	Apr		2009	2010
	2010	2010	2010		\$m	\$m
	\$m	\$m	\$m	%	\$m	\$m
MAJOR COMMODITIES(c)						
011 Meat of bovine animals	269	360	356	2.0	4 276	3 252
041 Wheat and meslin	307	355	258	1.5	4 039	2 959
268 Wool and other animal hair	197	243	189	1.1	1 715	1 644
281 Iron ore and concentrates	2 310	2 418	3 195	18.2	29 566	24 266
283 Copper ores and concentrates	487	417	491	2.8	2 894	3 732
285 Aluminium ores and concentrates	370	442	486	2.8	5 378	4 082
321 Coal, not agglomerated	2 363	2 315	3 020	17.2	48 583	27 669
333 Crude petroleum oils	555	786	1 158	6.6	7 148	7 133
334 Refined petroleum oils	214	185	159	0.9	2 387	1 953
343 Natural gas	733	774	684	3.9	9 051	6 457
682 Copper	137	177	216	1.2	2 289	2 000
684 Aluminium	273	337	399	2.3	4 613	3 336
781 Motor vehicles for transport of people	171	188	149	0.9	2 529	1 487
971 Gold, non-monetary	871	1 175	1 132	6.5	14 834	10 559
SECTION AND DIVISION OF THE SITC						
0 Food and live animals						
00 Live animals (excl. fish, crustaceans, molluscs and aquatic invertebrates)	90	99	91	0.5	978	994
01 Meat and meat preparations	442	551	543	3.1	6 288	5 072
02 Dairy products and birds' eggs	153	180	149	0.8	2 236	1 592
03 Fish (not marine mammals), crustaceans, molluscs and aquatic invertebrates, and preparations thereof	99	83	81	0.5	982	843
04 Cereals and cereal preparations	469	563	408	2.3	5 680	4 291
05 Vegetables and fruit	123	131	122	0.7	1 307	1 244
06 Sugars, sugar preparations and honey	27	28	22	0.1	215	246
07 Coffee, tea, cocoa, spices, and manufactures thereof	23	21	22	0.1	245	240
08 Feeding stuff for animals (excl. unmilled cereals)	65	76	74	0.4	1 161	821
09 Miscellaneous edible products and preparations	63	77	72	0.4	547	605
<i>Total Food and live animals</i>	<i>1 554</i>	<i>1 809</i>	<i>1 584</i>	<i>9.0</i>	<i>19 639</i>	<i>15 947</i>
1 Beverages and tobacco						
11 Beverages	177	207	174	1.0	2 197	1 943
12 Tobacco and tobacco manufactures	7	13	15	0.1	112	110
<i>Total Beverages and tobacco</i>	<i>184</i>	<i>220</i>	<i>189</i>	<i>1.1</i>	<i>2 309</i>	<i>2 053</i>
2 Crude materials, inedible, except fuels						
21 Hides, skins and furskins, raw	46	58	55	0.3	557	462
22 Oil-seeds and oleaginous fruits	86	55	54	0.3	586	542
23 Crude rubber (incl. synthetic and reclaimed)	1	2	1	—	10	11
24 Cork and wood	92	90	103	0.6	1 027	934
25 Pulp and waste paper	19	23	25	0.1	220	195
26 Textile fibres and their wastes (not manufactured into yarn or fabric)	256	279	217	1.2	2 140	2 138
27 Crude fertilizers (excl. those of Division 56) and crude minerals (excl. coal, petroleum and precious stones)	24	31	36	0.2	296	250
28 Metalliferous ores and metal scrap	3 834	4 040	4 865	27.7	44 586	38 604
29 Crude animal and vegetable materials, n.e.s.	15	15	17	0.1	203	165
<i>Total Crude materials, inedible, except fuels</i>	<i>4 373</i>	<i>4 594</i>	<i>5 373</i>	<i>30.6</i>	<i>49 625</i>	<i>43 301</i>
3 Mineral fuels, lubricants and related materials						
32 Coal, coke and briquettes	2 367	2 330	3 033	17.3	48 781	27 748
33 Petroleum, petroleum products and related materials	771	973	1 319	7.5	9 549	9 099
34 Gas, natural and manufactured	807	904	767	4.4	9 961	7 417
<i>Total Mineral fuels, lubricants and related materials</i>	<i>3 945</i>	<i>4 207</i>	<i>5 119</i>	<i>29.2</i>	<i>68 292</i>	<i>44 264</i>

— nil or rounded to zero (including null cells)

(a) Some SITC sections and divisions exclude commodities subject to a confidentiality restriction. These are included in Division 98. For more information see paragraph 26 of the Explanatory Notes.

(b) Per cent of total merchandise is calculated for the most recent month.

(c) The 'Major commodities' section lists commodities at the SITC Rev 4 3-digit level which are the most significant (by value) or are of particular interest. Abbreviated descriptors have been used. The list of 'Major commodities' is reviewed annually.

	Feb 2010	Mar 2010	Apr 2010	Per cent of total merchandise exports(b)	10 MONTHS ENDED APRIL	
					2009	2010
					\$m	\$m
SECTION AND DIVISION OF THE SITC						
4	Animal and vegetable oils, fats and waxes					
41	18	29	27	0.2	269	213
42	12	13	15	0.1	149	128
43	Fats and oils (processed), waxes and inedible mixtures or preparations, of animal or vegetable origin, n.e.s.					
	1	1	1	—	12	10
	<i>Total Animal and vegetable oils, fats and waxes</i>					
	30	43	43	0.2	430	351
5	Chemicals and related products, n.e.s.					
51	15	18	16	0.1	141	139
52	48	45	42	0.2	474	430
53	56	53	44	0.2	480	540
54	256	405	302	1.7	3 298	3 368
55	Essential oils and resinoids and perfume materials, toilet, polishing and cleansing preparations					
	49	59	55	0.3	513	514
56	8	10	12	0.1	657	282
57	26	30	26	0.1	253	231
58	32	31	26	0.1	332	293
59	79	90	81	0.5	925	816
	<i>Total Chemicals and related products, nes</i>					
	568	741	604	3.4	7 074	6 613
6	Manufactured goods classified chiefly by material					
61	22	24	22	0.1	230	207
62	15	17	14	0.1	217	152
63	7	11	13	0.1	137	116
64	60	74	64	0.4	564	571
65	23	27	21	0.1	304	235
66	79	79	43	0.2	747	631
67	104	108	117	0.7	1 224	840
68	661	791	889	5.1	9 358	7 781
69	81	88	93	0.5	917	883
	<i>Total Manufactured goods classified chiefly by material</i>					
	1 053	1 218	1 273	7.3	13 697	11 415
7	Machinery and transport equipment					
71	63	75	74	0.4	753	661
72	126	157	137	0.8	1 632	1 497
73	12	7	16	0.1	158	115
74	General industrial machinery and equipment, n.e.s. and machine parts, n.e.s.					
	130	154	128	0.7	1 587	1 396
75	89	98	87	0.5	1 025	840
76	Telecommunications and sound recording and reproducing apparatus and equipment					
	76	72	64	0.4	940	770
77	Electrical machinery, apparatus and appliances, parts (incl. non electrical counterparts of electrical domestic equip)					
	130	133	123	0.7	1 457	1 252
78	245	291	235	1.3	3 369	2 300
79	109	99	86	0.5	1 247	1 089
	<i>Total Machinery and transport equipment</i>					
	981	1 085	950	5.4	12 169	9 919

— nil or rounded to zero (including null cells)

(b) Per cent of total merchandise is calculated for the most recent month.

(a) Some SITC sections and divisions exclude commodities subject to a confidentiality restriction. These are included in Division 98. For more information see paragraph 26 of the Explanatory Notes.

	Feb	Mar	Apr	Per cent	10 MONTHS	
	2010	2010	2010	of total	ENDED APRIL	
	\$m	\$m	\$m	merchandise	2009	2010
				exports (b)	\$m	\$m
				%		
SECTION AND DIVISION OF THE SITC						
8	Miscellaneous manufactured articles					
81	Prefabricated buildings and sanitary, plumbing, heating and lighting fixtures and fittings, n.e.s.					
	12	13	12	0.1	118	135
82	Furniture and parts thereof; bedding, mattresses, mattress supports, cushions and similar stuffed furnishings					
	12	12	9	0.1	108	91
83	Travel goods, handbags and similar containers					
	3	3	3	—	26	29
84	Articles of apparel and clothing accessories					
	22	26	21	0.1	205	206
85	Footwear					
	4	3	3	—	43	35
87	Professional, scientific and controlling instruments and apparatus, n.e.s.					
	161	169	143	0.8	1 867	1 621
88	Photographic apparatus, equipment and supplies and optical goods, n.e.s., watches and clocks					
	20	24	20	0.1	313	238
89	Miscellaneous manufactured articles, n.e.s.					
	155	175	139	0.8	1 906	1 699
	<i>Total Miscellaneous manufactured articles</i>					
	387	425	351	2.0	4 585	4 054
9	Commodities and transactions not classified elsewhere in the SITC					
93	Special transactions and commodities not classified according to kind					
	145	151	141	0.8	1 438	1 546
95	Gold coin whether or not legal tender, and other coin being legal tender					
	23	34	22	0.1	558	343
96	Coin (excl. gold coin) not being legal tender					
	—	—	—	—	—	—
97	Gold, non-monetary (excl. gold ores and concentrates)					
	871	1 175	1 132	6.5	14 834	10 559
98	Combined confidential items excl. some of SITC 280 (exports only) and some of SITCs 510 and 520 (imports only)					
	531	605	762	4.3	4 943	5 882
	<i>Total Commodities and transactions not classified elsewhere in the SITC</i>					
	1 571	1 965	2 058	11.7	21 773	18 330
<b>Total merchandise exports</b>						
	<b>14 647</b>	<b>16 307</b>	<b>17 543</b>	<b>100.0</b>	<b>199 592</b>	<b>156 246</b>
Balance of Payments Adjustments						
	-57	-18	73	..	606	310
Goods Credits (exports) on a Balance of Payments Basis						
	14 590	16 289	17 616	..	200 198	156 556

.. not applicable  
 — nil or rounded to zero (including null cells)

(a) Some SITC sections and divisions exclude commodities subject to a confidentiality restriction. These are included in Division 98. For more information see paragraph 26 of the Explanatory Notes.

(b) Per cent of total merchandise is calculated for the most recent month.

				Per cent	10 MONTHS	
	Feb	Mar	Apr	of total	ENDED APRIL	
	2010	2010	2010	merchandise	2009	2010
	\$m	\$m	\$m	imports(b)	\$m	\$m
				%		
MAJOR COMMODITIES						
333 Crude petroleum oils	1 242	1 196	1 439	8.6	12 396	12 103
334 Refined petroleum oils	782	949	893	5.3	10 643	8 858
542 Medicaments	622	658	585	3.5	6 039	6 149
641 Paper and paperboard	153	173	156	0.9	1 758	1 586
723 Civil engineering and contractors' plant and equipment	210	304	216	1.3	3 077	2 201
751 Office machines	150	154	167	1.0	1 656	1 611
752 Automatic data processing machines	426	567	543	3.2	4 914	4 834
761 Televisions	184	154	207	1.2	2 399	2 575
764 Telecommunications equipment	404	600	555	3.3	6 164	5 690
781 Motor vehicles for the transport of people	1 237	1 525	1 374	8.2	9 756	12 143
782 Motor vehicles for the transport of goods	515	674	549	3.3	4 522	4 839
784 Parts and accessories of motor vehicles	190	230	215	1.3	2 119	1 995
971 Gold, non-monetary	522	649	949	5.6	10 271	6 197

## SECTION AND DIVISION OF THE SITC

0	Food and live animals					
00	Live animals other than fish, crustaceans, molluscs and aquatic invertebrates	27	10	7	—	91 89
01	Meat and meat preparations	43	52	59	0.4	476 463
02	Dairy products and birds' eggs	56	53	52	0.3	509 491
03	Fish (not marine mammals), crustaceans, molluscs and aquatic invertebrates, and preparations thereof	97	100	95	0.6	1 111 1 054
04	Cereals and cereal preparations	50	59	58	0.3	689 669
05	Vegetables and fruit	122	124	108	0.6	1 427 1 298
06	Sugars, sugar preparations and honey	20	41	20	0.1	219 250
07	Coffee, tea, cocoa, spices, and manufactures thereof	69	96	79	0.5	1 002 980
08	Feeding stuff for animals (excl. unmilled cereals)	30	57	38	0.2	508 496
09	Miscellaneous edible products and preparations	113	142	105	0.6	1 287 1 325
	<i>Total Food and live animals</i>	627	735	620	3.7	7 320 7 116
1	Beverages and tobacco					
11	Beverages	84	105	97	0.6	1 308 1 261
12	Tobacco and tobacco manufactures	18	34	23	0.1	192 221
	<i>Total Beverages and tobacco</i>	102	139	121	0.7	1 500 1 482
2	Crude materials, inedible, except fuels					
21	Hides, skins and furskins, raw	—	—	—	—	2 1
22	Oil-seeds and oleaginous fruits	5	5	4	—	51 43
23	Crude rubber (incl. synthetic and reclaimed)	10	11	11	0.1	162 110
24	Cork and wood	48	55	53	0.3	512 500
25	Pulp and waste paper	14	15	15	0.1	243 154
26	Textile fibres and their wastes (not manufactured into yarn or fabric)	9	11	8	—	112 112
27	Crude fertilizers (excl. those of Division 56) and crude minerals (excl. coal, petroleum and precious stones)	7	17	8	—	433 106
28	Metalliferous ores and metal scrap	22	33	62	0.4	516 429
29	Crude animal and vegetable materials, n.e.s.	26	30	22	0.1	303 269
	<i>Total Crude materials, inedible, except fuels</i>	140	176	184	1.1	2 334 1 725
3	Mineral fuels, lubricants and related materials					
32	Coal, coke and briquettes	1	2	3	—	25 20
33	Petroleum, petroleum products and related materials	2 068	2 184	2 371	14.1	23 678 21 330
34	Gas, natural and manufactured	94	208	192	1.1	2 291 1 456
	<i>Total Mineral fuels, lubricants and related materials</i>	2 163	2 393	2 566	15.3	25 994 22 806

— nil or rounded to zero (including null cells)

(a) Some SITC sections and divisions exclude commodities subject to a confidentiality restriction. These are included in Division 98. For more information see paragraph 26 of the Explanatory Notes.

(b) Per cent of total merchandise is calculated for the most recent month.

(c) The 'Major commodities' section lists commodities at the SITC Rev 4 3-digit level which are the most significant (by value) or are of particular interest. Abbreviated descriptors have been used. The list of 'Major commodities' is reviewed annually.



	Feb	Mar	Apr	Per cent	10 MONTHS	
	2010	2010	2010	of total	ENDED APRIL	
	\$m	\$m	\$m	merchandise	2009	2010
				imports(b)		
				%	\$m	\$m
SECTION AND DIVISION OF THE SITC						
4	Animal and vegetable oils, fats and waxes					
41	5	2	3	—	35	25
42	23	27	36	0.2	444	358
43	Fats and oils (processed), waxes and inedible mixtures or preparations, of animal or vegetable n.e.s.					
	3	5	5	—	55	57
	<i>Total Animal and vegetable oils, fats and waxes</i>					
	32	35	44	0.3	534	439
5	Chemicals and related products, n.e.s.					
51	277	305	234	1.4	2 929	2 667
52	72	103	72	0.4	1 727	904
53	48	51	51	0.3	601	510
54	747	846	710	4.2	7 466	7 558
55	Essential oils and resinoids and perfume materials; toilet, polishing and cleansing preparations					
	134	157	141	0.8	1 533	1 518
56	99	194	205	1.2	1 544	811
57	104	125	120	0.7	1 423	1 110
58	102	115	112	0.7	1 217	1 144
59	145	171	157	0.9	1 861	1 586
	<i>Total Chemicals and related products, n.e.s.</i>					
	1 728	2 065	1 803	10.7	20 300	17 809
6	Manufactured goods classified chiefly by material					
61	12	14	11	0.1	147	116
62	215	278	253	1.5	2 310	2 337
63	62	63	51	0.3	607	535
64	209	233	213	1.3	2 468	2 256
65	194	198	179	1.1	2 230	2 001
66	222	232	205	1.2	2 406	2 187
67	281	305	294	1.7	5 044	2 654
68	165	262	176	1.0	1 709	2 009
69	380	383	369	2.2	4 920	4 143
	<i>Total Manufactured goods classified chiefly by material</i>					
	1 740	1 967	1 751	10.4	21 842	18 237
7	Machinery and transport equipment					
71	415	371	284	1.7	4 676	3 708
72	498	656	526	3.1	6 947	5 651
73	41	52	68	0.4	659	505
74	General industrial machinery and equipment, n.e.s. and machine parts, n.e.s.					
	751	992	787	4.7	10 185	9 669
75	653	807	786	4.7	7 577	7 247
76	Telecommunications and sound recording and reproducing apparatus and equipment					
	657	819	838	5.0	9 670	9 262
77	Electrical machinery, apparatus, appliances, parts (incl. non-elec. counterparts of electrical domestic equip)					
	728	834	822	4.9	8 593	7 880
78	2 068	2 563	2 255	13.4	18 314	20 406
79	83	109	176	1.0	3 135	1 793
	<i>Total Machinery and transport equipment</i>					
	5 894	7 202	6 542	38.9	69 756	66 120

— nil or rounded to zero (including null cells)

(b) Per cent of total merchandise is calculated for the most recent month.

(a) Some SITC sections and divisions exclude commodities subject to a confidentiality restriction. These are included in Division 98. For more information see paragraph 26 of the Explanatory Notes.

				Per cent of total merchandise imports(b)	10 MONTHS ENDED APRIL		
	Feb	Mar	Apr		.....		
	2010	2010	2010		2009	2010	
	\$m	\$m	\$m	%	\$m	\$m	
SECTION AND DIVISION OF THE SITC							
8	Miscellaneous manufactured articles						
81	Prefabricated buildings; sanitary, plumbing, heating and lighting fixtures and fittings, n.e.s.	61	53	58	0.3	709	640
82	Furniture, parts thereof; bedding, mattresses, mattress supports, cushions and similar stuffed furnishings	195	163	189	1.1	2 442	2 152
83	Travel goods, handbags and similar containers	58	42	45	0.3	721	629
84	Articles of apparel and clothing accessories	509	403	413	2.5	4 809	4 178
85	Footwear	122	102	81	0.5	1 232	1 092
87	Professional, scientific and controlling instruments and apparatus, n.e.s.	368	425	371	2.2	4 182	3 824
88	Photographic apparatus, equipment and supplies and optical goods, n.e.s., watches and clocks	96	107	97	0.6	1 280	1 159
89	Miscellaneous manufactured articles, n.e.s.	680	756	709	4.2	9 629	8 387
	<i>Total Miscellaneous manufactured articles</i>	2 090	2 053	1 963	11.7	25 003	22 060
9	Commodities and transactions not classified elsewhere in the SITC						
93	Special transactions and commodities not classified according to kind	4	3	3	—	49	32
95	Gold coin whether or not legal tender, and other coin being legal tender	1	1	1	—	5	7
96	Coin (excl. gold coin), not being legal tender	—	—	—	—	1	1
97	Gold, non-monetary (excl. gold ores and concentrates)	522	649	949	5.6	10 271	6 197
98	Combined confidential items excl. some of SITC 280 (exports only) and some of SITCs 510 and 520 (imports only)	235	608	272	1.6	4 155	4 410
	<i>Total Commodities and transactions not classified elsewhere in the SITC</i>	763	1 261	1 225	7.3	14 481	10 648
	<b>Total merchandise imports</b>	<b>15 279</b>	<b>18 025</b>	<b>16 818</b>	<b>100.0</b>	<b>189 064</b>	<b>168 441</b>
	Balance of Payments Adjustments	274	332	237	..	2 231	2 277
	Goods Debits (imports) on a Balance of Payments Basis	15 553	18 357	17 055	..	191 295	170 718

.. not applicable  
— nil or rounded to zero (including null cells)

(a) Some SITC sections and divisions exclude commodities subject to a confidentiality restriction. These are included in Division 98. For more information see paragraph 26 of the Explanatory Notes.

(b) Per cent of total merchandise is calculated for the most recent month.

	EXPORTS				IMPORTS (b)				BALANCE OF MERCHANDISE TRADE	
	2008-09	Apr 2010	10	10	2008-09	Apr 2010	10	10	2008-09	10
			months ended April 2009	months ended April 2010			Months Ended April 2009	Months Ended April 2010		
\$m	\$m	\$m	\$m	\$m	\$m	\$m	\$m			
Belgium	1 301	138	1 214	873	1 719	104	1 508	1 312	-418	-439
Brazil	1 483	113	1 343	974	1 041	49	950	494	442	479
Canada	1 557	140	1 282	1 074	2 437	140	2 169	1 435	-880	-361
China	39 325	4 062	31 918	34 439	37 044	2 819	31 865	30 171	2 281	4 268
Denmark	176	13	148	114	1 070	79	914	951	-894	-837
Egypt(c)	453	25	369	330	33	1	29	22	420	308
Fiji	374	24	320	255	160	15	132	133	215	123
Finland	595	42	560	236	978	54	854	542	-383	-306
France	1 721	113	1 513	883	4 653	300	4 069	3 297	-2 932	-2 414
Germany	2 197	135	1 912	1 217	11 106	928	9 536	8 889	-8 909	-7 672
Hong Kong (SAR of China)	3 192	195	2 725	2 226	1 424	77	1 223	948	1 768	1 278
India	15 425	1 430	12 782	13 036	2 114	141	1 846	1 571	13 311	11 466
Indonesia	4 295	353	3 552	3 540	5 039	272	4 238	3 825	-744	-285
Iran	661	7	598	117	95	3	90	79	567	39
Iraq	194	10	105	194	31	—	31	—	163	194
Ireland	134	10	114	96	2 399	157	1 956	1 852	-2 265	-1 756
Israel	262	7	221	140	715	54	631	479	-453	-339
Italy	1 556	70	1 439	741	5 338	357	4 536	3 987	-3 783	-3 246
Japan	52 768	3 348	47 265	29 270	17 842	1 410	15 247	14 758	34 926	14 512
Korea, Republic of	19 274	1 566	16 838	12 836	6 523	636	5 313	5 719	12 751	7 117
Kuwait	428	23	371	429	426	—	381	305	2	124
Malaysia	3 730	329	3 117	2 596	8 335	757	7 140	6 680	-4 605	-4 083
Mexico	902	73	728	638	1 324	117	1 133	1 009	-422	-371
Netherlands	3 202	197	2 925	1 527	1 771	88	1 535	1 143	1 431	384
New Zealand	8 549	681	7 284	6 696	7 050	623	6 021	5 744	1 500	952
Pakistan	478	17	403	474	181	16	155	129	296	345
Papua New Guinea	1 611	119	1 341	1 631	3 013	249	2 599	2 451	-1 402	-820
Philippines	1 409	69	1 267	882	605	38	498	387	804	494
Saudi Arabia	2 250	133	2 029	1 253	935	19	817	387	1 315	866
Singapore	5 522	479	4 613	4 385	13 445	1 035	11 976	8 976	-7 923	-4 591
South Africa	2 056	145	1 836	1 368	1 258	88	1 106	850	798	518
Spain	612	52	555	364	1 731	141	1 487	1 393	-1 119	-1 029
Sweden	566	22	524	262	2 441	176	2 097	1 682	-1 875	-1 420
Switzerland	660	27	527	206	2 481	168	2 064	1 872	-1 821	-1 667
Taiwan	8 126	624	7 056	5 148	4 089	253	3 604	2 822	4 037	2 327
Thailand	4 951	418	4 250	4 020	10 749	1 233	9 334	10 285	-5 799	-6 265
Turkey	811	36	770	230	507	37	446	379	304	-149
United Arab Emirates	3 604	143	3 285	1 586	1 924	272	1 534	1 982	1 680	-395
United Kingdom	11 509	625	10 546	4 224	9 024	434	8 050	4 807	2 484	-582
United States of America	11 600	702	10 202	7 753	25 334	1 846	21 802	18 185	-13 734	-10 432
Viet Nam	1 234	112	985	1 140	4 402	329	3 726	2 554	-3 168	-1 414
Other Countries(b)	10 070	712	8 757	6 838	16 697	1 304	14 423	13 952	-6 626	-7 114
<b>Total</b>	<b>230 829</b>	<b>17 543</b>	<b>199 592</b>	<b>156 246</b>	<b>219 485</b>	<b>16 818</b>	<b>189 064</b>	<b>168 441</b>	<b>11 344</b>	<b>-12 195</b>
APEC	169 417	13 347	145 643	119 044	151 755	12 056	130 597	118 709	17 663	335
ASEAN	21 286	1 773	17 904	16 683	43 640	3 723	37 885	33 511	-22 354	-16 828
Developing Countries	124 497	10 695	104 895	95 080	106 794	8 706	91 948	84 688	17 703	10 392
Least Developed Countries	2 144	166	1 751	1 478	281	24	216	237	1 862	1 240
European Union(d)	24 043	1 443	21 863	10 831	45 402	3 047	39 248	31 960	-21 358	-21 130
OECD	120 069	8 025	106 675	69 526	110 059	8 105	94 415	81 982	10 010	-12 456

— nil or rounded to zero (including null cells)

(a) See Time series spreadsheets for details of all countries.

(b) From September 2008 imports data with confidentiality restrictions 'no commodity details' or 'no value details' are included in Other countries.

(c) Exports of Alumina to Egypt are excluded from country total and included in the 'Other Countries' category.

(d) The European Union includes 27 member countries.

	10 MONTHS ENDED APRIL			
	2008-09	Apr 2010	2009	2010
	\$m	\$m	\$m	\$m
EXPORTS (a)				
New South Wales	38 777	2 687	33 410	25 150
Victoria	20 375	1 544	17 442	15 062
Queensland	56 553	3 753	49 391	33 166
South Australia	9 527	679	8 098	6 477
Western Australia	86 880	7 545	75 419	62 901
Tasmania	3 511	304	2 866	2 390
Northern Territory	6 292	376	5 427	4 028
Australian Capital Territory	11	—	10	4
State not available for publication(b)	797	59	721	454
Re-exports	8 105	597	6 807	6 613
<b>Total</b>	<b>230 829</b>	<b>17 543</b>	<b>199 592</b>	<b>156 246</b>
IMPORTS				
New South Wales	78 994	6 222	67 346	62 521
Victoria	56 457	4 457	48 847	44 113
Queensland	33 972	2 507	29 295	25 463
South Australia	6 867	569	5 955	5 426
Western Australia	33 123	2 432	28 817	23 275
Tasmania	956	43	852	612
Northern Territory	4 347	316	3 906	2 618
Australian Capital Territory	7	—	7	4
State not available for publication(c)	4 761	272	4 041	4 410
<b>Total</b>	<b>219 485</b>	<b>16 818</b>	<b>189 064</b>	<b>168 441</b>

— nil or rounded to zero (including null cells)

(a) State in which the final stage of production or manufacture occurs.

(b) Exports of Alumina to Bahrain, Egypt and Iceland are excluded from the state totals and included in 'State not available for publication'.

(c) From September 2008 imports data with confidentiality restrictions 'no commodity details' or 'no value details' are included in State not available for publication.

## PERIOD AVERAGE EXCHANGE RATES(a), Per Australian dollar

<i>Period</i>	<i>United States dollar</i>	<i>UK pound sterling</i>	<i>Euro</i>	<i>Japanese yen</i>	<i>Special Drawing Right</i>	<i>Trade-weighted index of value of the A\$(b)</i>
FINANCIAL YEAR						
2006-07	0.7863	0.4066	0.6018	93.21	0.5251	64.8
2007-08	0.8968	0.4479	0.6099	98.63	0.5664	69.7
2008-09	0.7456	0.4621	0.5414	73.99	0.4869	60.2
MONTHS						
2009						
February	0.6490	0.4503	0.5074	59.97	0.4386	54.2
March	0.6646	0.4680	0.5093	64.92	0.4483	56.0
April	0.7122	0.4846	0.5398	70.24	0.4773	59.1
May	0.7626	0.4954	0.5596	73.72	0.5022	61.7
June	0.8023	0.4898	0.5721	77.39	0.5194	64.2
July	0.8040	0.4913	0.5709	75.96	0.5180	64.0
August	0.8344	0.5047	0.5852	79.15	0.5349	66.0
September	0.8611	0.5275	0.5915	78.74	0.5461	67.2
October	0.9090	0.5613	0.6130	82.03	0.5716	70.0
November	0.9202	0.5540	0.6166	82.04	0.5754	70.6
December	0.9028	0.5552	0.6174	80.89	0.5693	69.6
2010						
January	0.9148	0.5659	0.6400	83.49	0.5842	70.7
February	0.8863	0.5663	0.6474	79.99	0.5759	69.2
March	0.9120	0.6058	0.6716	82.58	0.5968	71.1
April	0.9265	0.6043	0.6902	86.45	0.6105	72.1

(a) These exchange rates and the trade-weighted index are derived using rates provided by the Reserve Bank of Australia in respect of each trading day.

(b) May 1970 = 100. The Trade-weighted index is reweighted annually on 1 October and on special occasions as required.

	2006-07	2007-08	2008-09	Oct 2009	Nov 2009	Dec 2009	Jan 2010	Feb 2010	Mar 2010
	\$m	\$m	\$m	\$m	\$m	\$m	\$m	\$m	\$m
<b>BALANCE</b>									
<b>On goods and services</b>	—	—	—	—	—	—	—	—	—
<b>CREDITS</b>									
Total goods and services	—	—	—	—	—	—	—	—	—
<i>Total goods</i>	—	—	—	—	—	—	—	—	—
Rural goods	—	—	—	—	—	—	—	—	—
Non-rural goods	—	—	—	—	—	—	—	—	—
Net exports of goods under merchandising	—	—	—	—	—	—	—	—	—
Non-monetary gold	—	—	—	—	—	—	—	—	—
<i>Total services</i>	—	—	—	—	—	—	—	—	—
<b>DEBITS</b>									
Total goods and services	—	—	—	—	—	—	—	—	—
<i>Total goods</i>	—	—	—	—	—	—	—	—	—
Consumption goods	—	—	—	—	—	—	—	—	—
Capital goods	—	—	—	—	—	—	—	—	—
Intermediate and other merchandise goods	—	—	—	—	—	—	—	—	—
Non-monetary gold debits	—	—	—	—	—	—	—	—	—
<i>Total services</i>	—	—	—	—	—	—	—	—	—

— nil or rounded to zero (including null cells)

(a) This table is presented consistent with BPM6 sign conventions. This means for the balance on goods and services a negative revision indicates a decrease in a surplus or an increase in a deficit. For debits a negative revision indicates an increase in debits while a positive revision indicates a decrease in debits.

## EXPLANATORY NOTES

### INTRODUCTION

**1** This publication presents preliminary estimates of Australia's international trade in goods and services on a balance of payments basis (Tables 1–11 and 17) and merchandise import and export statistics on a recorded trade basis (Tables 12–15). In addition, Table 16 Exchange rates and trade-weighted indexes are derived by using exchange rates and indexes provided by the Reserve Bank.

**2** Merchandise trade statistics on a recorded trade basis are compiled from information submitted by exporters and importers or their agents to the Australian Customs and Border Protection Service (Customs and Border Protection). Adjustments for coverage, timing and valuation are made to recorded trade data to convert them to a balance of payments basis. The services data are sourced from the quarterly Survey of International Trade in Services and a range of administrative data and indicator series.

**3** More comprehensive quarterly estimates of Australia's trade in goods and services, together with comprehensive details of Australia's balance of payments are included in the quarterly publication, *Balance of Payments and International Investment Position, Australia* (cat. no. 5302.0). Detailed monthly statistics on merchandise trade are available in Time Series Spreadsheets on the ABS website or by subscription to tailored services. More information on the *International Trade in Services by country, by state and by detailed services category* are available on a financial year basis (cat. no. 5368.0.55.003) with the September issue of this publication and calendar year basis (cat. no. 5368.0.55.004) with the March issue of this publication.

### CONCEPTS, SOURCES AND METHODS

**4** The conceptual framework used in compiling Australia's merchandise trade statistics can be found in *International Merchandise Trade, Australia: Concepts, Sources and Methods, 2001* (cat. no. 5489.0).

**5** The conceptual framework used in compiling Australia's balance of payments statistics is based on the *International Monetary Fund's Balance of Payments and International Investment Position Manual Sixth Edition* (BPM6). Descriptions of the underlying concepts and structure of the balance of payments and the sources, methods and terms used in compiling the estimates are presented in *Balance of Payments and International Investment Position, Australia: Concepts, Sources and Methods, 1998* (cat. no. 5331.0). The current version of this document reflects the international standards prior to BPM6. A revised Concepts, Sources and Methods publication is scheduled for release in late 2010. The *Information paper: Implementation of new international statistical standards in the ABS National and International Accounts, September 2009* (cat. no. 5310.0.55.002) describes the key changes introduced with BPM6.

**6** To bring merchandise trade statistics on a recorded trade basis to a balance of payments basis, timing adjustments are made to ensure that the transaction is recorded in the period in which ownership changed, rather than in the period in which the transaction was recorded by Customs and Border Protection or the period in which the goods arrived in/departed from an Australian port. Adjustments are also made to account for the change of ownership of goods not included in merchandise trade statistics. Chapter 6 of cat. no. 5331.0 provides more detail on the relationship between statistics on international merchandise trade on a recorded trade basis and on a balance of payments basis.

**7** Recorded trade exports data presented for recent months in tables 12–15 of this publication are based on information initially reported by exporters to Customs and Border Protection. At the time of initial reporting to Customs and Border Protection the final prices may not be known for some commodities. Therefore, the information recorded for recent months for commodities like iron ore and coal can include a variety of prices including previous or current contract prices and the prevailing spot prices. Newly negotiated contract prices may not be fully reflected in the data first reported to

## EXPLANATORY NOTES *continued*

### CONCEPTS, SOURCES AND METHODS *continued*

Customs and Border Protection, and to compensate for this, the Balance of Payments series may reflect adjusted price levels.

**8** The Concepts, Sources and Methods publications and information papers are available to download for free from the ABS website. Select *Statistics*, then select *By Catalogue Number*, and then the catalogue numbers as above.

### CLASSIFICATIONS

**9** The merchandise trade data on a recorded trade basis are presented using the following commodity classifications:

- the Harmonised System 2007 (available on request)
- the Standard International Trade Classification (SITC Revision 4)
- the Classification by Broad Economic Categories (BEC)
- the industry classification: Australian and New Zealand Standard Industrial Classification, 2006 (ANZSIC 06) from July 2005.

**10** The Balance of Payments Goods and Services series are presented according to three classifications with the goods classifications derived from SITC Revision 4 and BEC. The classifications are:

- for goods:
  - the Balance of Payments Commodities for Exports (BoPCE)
  - the Balance of Payments Broad Economic Categories for Imports (BoPBEC),
- for services:
  - the Extended Balance of Payments Services Classification (EBOPS).

### ACCURACY, RELIABILITY AND REVISIONS

**11** While every effort is made to ensure the accuracy and reliability of estimates, most series are subject to revision as more complete and accurate information becomes available. Care should be exercised in the use and interpretation of estimates in this publication. The transactions occurring in international trade in goods and services are of many different kinds, and therefore the compilation of trade estimates entails the use of a very wide range of statistical data of varying degrees of accuracy and timeliness. For further information on the monthly services series, see paragraph 25.

**12** The revisions are applied differently for merchandise trade and Balance of Payments series. Each month, merchandise trade data are revised for the previous six months to incorporate latest available data.

**13** For the Balance of Payments Goods and Services series, in original terms, no revisions are applied in the July, October, January or April issues. This is to ensure the monthly series align with the comparable series in the quarterly publication. In the September issue revisions can be applied to the four previous financial years. In other issues revisions can be applied to the previous and current financial years to incorporate the latest available survey and administrative data.

**14** In seasonally adjusted and trend terms, revisions may occur at any time point but tend to focus on the most recent estimates. Please also refer to paragraphs 17 (seasonal adjustment) and 19 (trend estimates) below.

### SIGN CONVENTION

**15** In keeping with BPM6 conventions, balance of payments basis credit entries are shown with an implied positive sign and debit items are shown as negative entries. For statistics on a recorded trade basis, both imports and exports are shown without sign. The calculation of percentage changes on balance of payments debit items are made without regard to sign. References to balance of payments debit items in Key Figures, Key Points, and Analysis and Comments are also made without regard to sign.

### SEASONALLY ADJUSTED AND TREND ESTIMATES

**16** The estimates of international trade in goods and services on a balance of payments basis are seasonally adjusted, however the merchandise exports and imports statistics on a recorded trade basis are not. Monthly original estimates are volatile, being subject to calendar-related and large irregular influences. Seasonally adjusted estimates are derived



## EXPLANATORY NOTES *continued*

### SEASONALLY ADJUSTED AND TREND ESTIMATES *continued*

by estimating and removing from the original series systematic calendar related effects, such as seasonal (e.g. Christmas), trading day and moving holiday (e.g. Easter) influences. Seasonal adjustment does not aim to remove the irregular or non-seasonal influences which may be present in any particular month. These irregular influences may reflect both random economic events and difficulties of statistical recording.

**17** The seasonally adjusted statistics in this publication use the concurrent seasonal adjustment technique and Autoregressive Integrated Moving Average (ARIMA) modelling to estimate factors for the current and previous months. Under concurrent seasonal adjustment, the estimates of seasonal factors are fine tuned as new or revised original estimates become available each period. The seasonally adjusted estimates are subject to revisions at each reference month as the estimates of seasonal factors are improved.

**18** ARIMA modelling relies on the characteristics of the series being analysed to project future period data. ARIMA modelling is used on a case-by-case basis where it results in reduced revisions to seasonally adjusted series when subsequent data become available. The projected values are temporary, intermediate values, that are only used internally to improve the estimation of the seasonal factors. The projected data do not affect the original estimates and are discarded at the end of the seasonal adjustment process. The ARIMA model is assessed as part of the annual review and, following the 2009 annual review, 40 of the 45 directly seasonally adjusted trade in goods and services time series use an ARIMA model.

**19** The month-to-month movements of the seasonally adjusted estimates may not be reliable indicators of underlying behaviour because they include irregular or non-seasonal movements. Trend estimates reduce the effect of these movements as they are derived by applying a 13-term Henderson moving average to the seasonally adjusted series. The 13-term Henderson moving average (like all Henderson averages) is symmetric, but as the end of a time series is approached, asymmetric forms of the average are applied. While the asymmetric weights enable trend estimates for recent months to be produced, it does result in revisions to the estimates for the most recent six months as additional observations become available. Revisions to trend estimates can also occur because of revisions to the original data and as a result of the re-estimation of the seasonal factors. Trend estimates should be used with caution, especially around the time of unusual influences, until these have been appropriately taken into account.

**20** Information papers and articles on time series methods are available on the ABS website:

- for seasonal adjustment methods, see *Information Paper: An Introductory Course on Time Series Analysis, Jan 2005* (cat. no. 1346.0.55.001) and *Time Series Analysis Frequently Asked Questions, 2003* (cat. no. 1346.0.55.002)
- for ARIMA modelling, see *Feature article: Use of ARIMA modelling to reduce revisions* in the October 2004 issue of *Australian Economic Indicators* (cat. no. 1350.0)
- for trend estimates methods, see *Information Paper: A Guide to Interpreting Time Series – Monitoring Trends* (cat. no. 1349.0)
- alternatively contact the Assistant Director, Time Series Analysis on (02) 6252 6345 or e-mail <time.series.analysis@abs.gov.au>.

### ECONOMIC TERRITORY

**21** In accordance with BPM6 definitions, Australia's economic territory, on a balance of payments basis, is the area under the effective control of the Australian government. It includes the land area, airspace, territorial waters, including jurisdiction over fishing rights and rights to fuels and minerals. Australian economic territory also includes territorial enclaves in the rest of the world. These are clearly demarcated areas of land, located in other countries and which are owned or rented by the Australian government

## EXPLANATORY NOTES *continued*

### ECONOMIC TERRITORY

*continued*

for diplomatic, military, scientific or other purposes. Specifically, the economic territory of Australia consists of:

- Geographic Australia which includes Cocos (Keeling) Islands and Christmas Island;
- Norfolk Island;
- Australian Antarctic Territory;
- Heard Island and McDonald Islands;
- Territory of Ashmore Reef and Cartier Island;
- Coral Sea Islands;
- Australia's territorial enclaves overseas; and
- the Joint Petroleum Development Area (joint territory between Australia and East Timor (Timor-Leste)).

**22** Because of administrative complexities and measurement difficulties, Norfolk Island transactions with the rest of the world will not always be captured in all relevant Balance of Payments statistics. Most of the transactions involving Norfolk Island are not material to Australia's trade performance and not capturing these transactions will not distort these statistics. However, any significant transactions will be identified and included in the relevant statistics.

### COMMODITY BREAKDOWN OF GOODS

**23** For details of the classifications used to present goods exports (credits) and imports (debits) on a balance of payments basis, see tables 6.6 and 6.7, respectively, in *Balance of Payments and International Investment Position, Australia: Concepts, Sources and Methods*, 1998 (cat. no. 5331.0).

**24** The recorded trade statistics shown in tables 12 and 13 are classified by the Standard International Trade Classification (SITC). Imports and exports of goods at a more detailed level are available from the Time Series spreadsheets on the ABS website. All data from July 2005 are presented according to SITC Rev 4 and data prior to July 2005 are presented according to SITC Rev 3. For details refer to the 'Classifications and Standards Update' in the July 2008 issue of this publication.

### MONTHLY SERVICES SERIES

**25** Monthly indicators for many of the services components that are only surveyed quarterly are not available. Monthly estimates for the freight and other transportation components of services credits in table 9 are derived by dividing the quarterly estimate by three. Freight debits are derived directly from imports data for the reference month as a difference between total merchandise cost, insurance and freight (CIF) and free on board (FOB), adjusted to reflect timing and processing adjustments. For freight credits and other transportation credits and debits, estimates are derived by extrapolating the last quarter's data by an average of movements for the same quarter over the three previous years, and then dividing the estimate by three. Similarly other services estimates are derived by extrapolating the last quarter's data by an average of movements for the same quarter over the previous three years, and then dividing the estimate by three.

### CONFIDENTIALITY OF MERCHANDISE TRADE STATISTICS

**26** The release of statistics for certain merchandise trade commodities is restricted in order to prevent the identification of the activities of an individual business, where this is requested by the business concerned. These restrictions do not affect the total value of exports and imports, but they can affect statistics at the country, state and commodity levels. Imports data that have the confidentiality restrictions 'No commodity details' or 'No value details' are aggregated into a single confidential commodity code. For data prior to September 2008, these data are added back into the appropriate state total and country total (i.e. these totals show the correct level of trade). From September 2008 these confidential data are not added back. Instead the confidential data are published as 'No country details' in the country totals and 'State not available for publication' in the state totals. Therefore, country and state totals from September 2008 may not represent the actual amount of trade in each country/state but only the trade in commodities without a 'No commodity details' or 'No value details' restriction. For information on the

## EXPLANATORY NOTES *continued*

### CONFIDENTIALITY OF MERCHANDISE TRADE STATISTICS *continued*

confidentiality restrictions applied to the merchandise trade statistics in this publication, refer to the current issue of *International merchandise trade: Confidential Commodities List (CCL)* (cat. no. 5372.0.55.001).

### TOURISM RELATED SERVICES

**27** The tourism related services memorandum items provide timely indicators of the movements in tourism related activities, not an absolute measure of the level of these activities. The tourism related indicator has been derived by combining total travel services (business, education-related and other personal travel) and passenger transportation services (which includes agency fees and commissions for air transport).

### SERVICES BY STATE AND BY PARTNER COUNTRY

**28** Annual services data by state, by country and detailed services are released twice yearly. Calendar year data are usually released with the March issue of this publication and financial year data are usually released with the September issue. Refer to Time series data for details.

**29** Services credits are classified by the state of provision, while services debits are classified by the state of consumption. The state allocations for transportation, travel, postal and courier, and telecommunication services are based on a number of indicators including merchandise trade statistics by state, overseas passenger arrivals and departures by state of clearance and data provided by the Department of Immigration and Citizenship. The allocation for other services (about 25% of all trade in services) is primarily based on the location of the business reporting the information, which serves as a proxy for the state of provision/consumption of that service. The data should be used with care but are considered suitable for analysis over time.

**30** A comprehensive explanation of the data sources used and the methodology applied in the compilation of partner country statistics is provided in Chapter 17 of *Balance of Payments and International Investment Position, Australia – Concepts, Sources and Methods* (cat. no. 5331.0). Approximately 7% of total services credits and 5% of total services debits for both 2007–08 and 2008–09 were either confidential, or unable to be allocated to individual countries.

### ABS DATA AVAILABLE

**31** More detailed balance of payments and recorded merchandise trade data, including forward seasonal factors are available as time series spreadsheets or data cubes from the ABS website. Merchandise trade data by commodity, country and state that are not on the ABS website may be available on request. Inquiries should be made to the National Information and Referral Service as shown on the back of this publication.

### RELATED PRODUCTS AND PUBLICATIONS

**32** Users may also wish to refer to the following publications which can be downloaded free of charge from the ABS website by using the 'Statistics' tab and selecting the relevant catalogue number:

- *Balance of Payments and International Investment Position, Australia* (cat. no. 5302.0) – issued quarterly
- *International Merchandise Imports, Australia* (cat. no. 5439.0) – issued monthly
- *International Trade Price Indexes, Australia* (cat. no. 6457.0) – issued quarterly
- *Balance of Payments and International Investment Position, Australia: Concepts, Sources and Methods* (cat. no. 5331.0)
- *Information Paper: Quality of Australian Balance of Payments Statistics* (cat. no. 5342.0)
- *International Merchandise Trade, Australia: Concepts, Sources and Methods* (cat. no. 5489.0)
- *A Guide to Australian Balance of Payments and International Investment Position Statistics* (cat. no. 5362.0.55.001).

## EXPLANATORY NOTES *continued*

---

### RELATED PRODUCTS AND PUBLICATIONS *continued*

**33** Current publications and other products released by the ABS are available from the Statistics tab on the ABS website. The ABS also issues a daily *Release Advice* on the website which details products to be released in the week ahead. A *foreign trade theme page* and a *balance of payments theme page* are available on the ABS website. Select *Topics @ a Glance – Economy – Foreign Trade* or *Balance of Payments*. This page provides direct links to all foreign trade and balance of payments related data and publications, recent changes and forthcoming events, links to relevant websites and a range of other information about the Australian International Accounts.

### ROUNDING

**34** Where figures have been rounded, discrepancies may occur between sums of the component items and totals. Percentage movements are calculated from data at the level of precision presented in this publication (i.e. \$m) except for international merchandise trade tables.

### ABBREVIATIONS

\$b	billion (thousand million) dollars
\$m	million dollars
ABS	Australian Bureau of Statistics
APEC	Asia Pacific Economic Co-operation
ASEAN	Association of South-East Asian Nations
n.e.s.	not elsewhere specified
n.i.e.	not included elsewhere
OECD	Organisation for Economic Co-operation and Development
SAR	Special Administrative Region
SITC	Standard International Trade Classification

## APPENDIX RELATED ARTICLES

<i>Article</i>	<i>Source(a)</i>	<i>Issue</i>
<b>Investment</b>		
Foreign ownership of equity	5302.0	Sep qtr 2007
Kangaroo bonds	1301.0	2006
Foreign currency exposure	5308.0	Mar qtr 2005
Gross external debt	5302.0	Sep qtr 2003
<b>Balance of payments</b>		
International comparison of balance of payments statistics	(b) 5363.0	1998–99
<b>Merchandise trade</b>		
Export And Import Invoice Currencies, Dec 2009	5368.0	Dec 2009
Characteristics of Australian Exporters	5368.0.55.006	2008–09
Export and import invoice currencies, 2007	5368.0	Dec 2007
100 years of international trade statistics	5368.0	Oct 2007
New methodology for deriving counts of Australian exports	5368.0	Feb 2006
Australia's Importers, 2003–04	5368.0	Nov 2004
Australia's Exporters, 2003–04	5368.0	Oct 2004
Australia's trade with the USA	5368.0	Mar 2004
Foreign ownership of Australian exporters and importers	5496.0.55.001	2002–03
Major commodities traded by Australia, 1991 to 2000	(b) 5422.0	Dec qtr 2000
<b>Trade in services</b>		
International trade in services by partner country, 2006, preliminary	5368.0	Dec 2006
Changes to International trade in services statistics, August 2006	5368.0	Aug 2006
Changes to International trade in services travel statistics	5368.0	Aug 2005
<b>Finance</b>		
Impact of the farm season on Australian production in 2002–03 and 2003–04	1301.0	2005
Recent trends in construction and first home buyers finance	5609.0	Mar 2002
Household sector data in the financial accounts	5232.0	Mar qtr 2002
<b>Technical information</b>		
Implementation of new international statistical standards in ABS National and International Accounts, September 2009	5310.0.55.002	Oct 2009
Estimation of Workers' Remittances based on Balance of Payments and International Investment Position Manual, Sixth Edition	5302.0.55.003	Sep 2009
Impact of revised international standards on monthly International Trade in Goods and Services	5368.0.55.014	Aug 2009
Changes to International Trade in Goods Statistics - Countries and Ports	5368.0.55.013	Jul 2009
Revisions to international standards in quarterly Balance of Payments and International Investment Position statistics from September 2009	5302.0.55.002	2009
Revisions to international standards in monthly international trade in goods and services statistics from August 2009	5368.0.55.012	2009
Changes to International Trade in Goods Industry Statistics, July 2009	5368.0.55.011	Dec 2008
Technical note 1 - Income on debt	5302.0	Jun qtr 2008
Technical note 2 - Use of CDI data	5302.0	Jun qtr 2008
Impact of introducing Revision 4 of the Standard International Trade Classification	5368.0.55.010	2008
Changes to international trade statistics July 2008	5368.0.55.009	2007–08
Introduction of revised international standards in ABS economic statistics in 2009	5310.0.55.001	2007
Changes on 1 January 2007 to Statistical Codes in the AHECC and the Customs Tariff	1233.0.55.001	Nov 2006
ABS implementation in January 2007 of revisions to international trade classifications, 2007	5368.0.55.005	Jun 2006
Revised treatment of Goods for Processing in Merchandise Trade and Balance of Payments Statistics	5368.0	May 2006
Impact of Customs and ABS changes on import statistics from October 2005	5439.0	Oct 2005
ABS management of the impact of the implementation of the imports component of the New Customs System	5439.0	Aug 2005
Changes to country and port classifications	5368.0	May 2003
Implementation of New Customs Systems	5368.0	Aug 2004
The effect of customs changes on export statistics	5422.0	Jun qtr 2002
Data confidentiality	5422.0	Dec qtr 1999

- (a) In the ABS website home page, select Statistics; By Catalogue Number; and click on the specified catalogue number and issue. Note: in some instances, a particular issue of the publication can be found in the Past & Future Releases page of the catalogue.
- (b) This article can be found in pdf format by referring to the Downloads page of the specified issue of this publication on the ABS website.





## FOR MORE INFORMATION . . .

*INTERNET*      **www.abs.gov.au** the ABS website is the best place for data from our publications and information about the ABS.

### INFORMATION AND REFERRAL SERVICE

Our consultants can help you access the full range of information published by the ABS that is available free of charge from our website. Information tailored to your needs can also be requested as a 'user pays' service. Specialists are on hand to help you with analytical or methodological advice.

*PHONE*                      1300 135 070

*EMAIL*                      [client.services@abs.gov.au](mailto:client.services@abs.gov.au)

*FAX*                              1300 135 211

*POST*                              Client Services, ABS, GPO Box 796, Sydney NSW 2001

## FREE ACCESS TO STATISTICS

All statistics on the ABS website can be downloaded free of charge.

*WEB ADDRESS*      [www.abs.gov.au](http://www.abs.gov.au)